



# **BUILDING A STRONG FOUNDATION: MOVING NEW HAMPSHIRE FORWARD**

NHFPI, FRIDAY, FEBRUARY 23, 2018

# Jackie Cowell

Executive Director  
Early Learning NH



# The Bedrock of the Granite State

The future prosperity of New Hampshire depends on our ability to steward the next generation who will live, work, and lead in our state.



# What develops?



## The Brain's Architecture

Like a house, the brain is built **from the bottom up**. Early experiences set the **foundation** for the architecture of the maturing brain, establishing a sturdy or fragile base for all the development that follows.

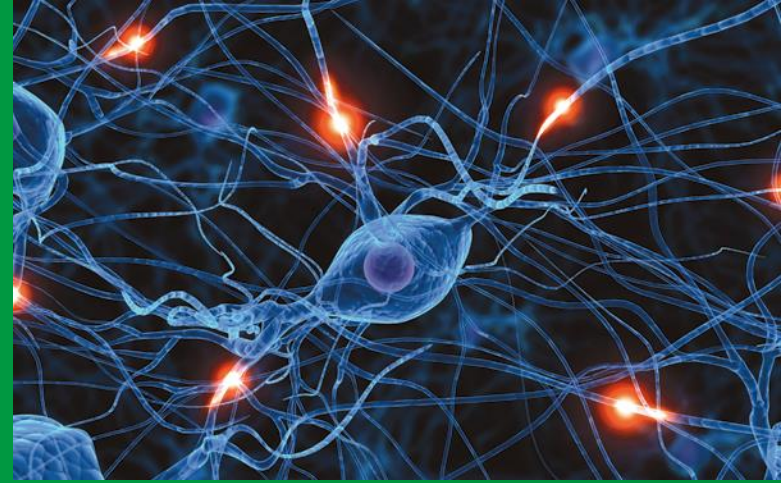
# How does development happen?



## Serve and Return Relationships

Strong brain architecture is formed by the “**serve and return**” relationships children have with supportive adults. When children reach out for connections and communications, and adults reciprocate, this **back-and-forth process wires the brain** with the connections needed for healthy brain architecture.

# What derails development?



## Toxic Stress

Unlike mild, short-lived stress that can be good for growth, certain types of stress can weaken the brain's architecture. Experiences such as exposure to violence can cause **toxic stress responses** in the brain, with lifelong consequences in health, learning and behavior.

**Supportive adults can buffer toxic stress**, however, reducing or preventing its effects.



# What's the solution?



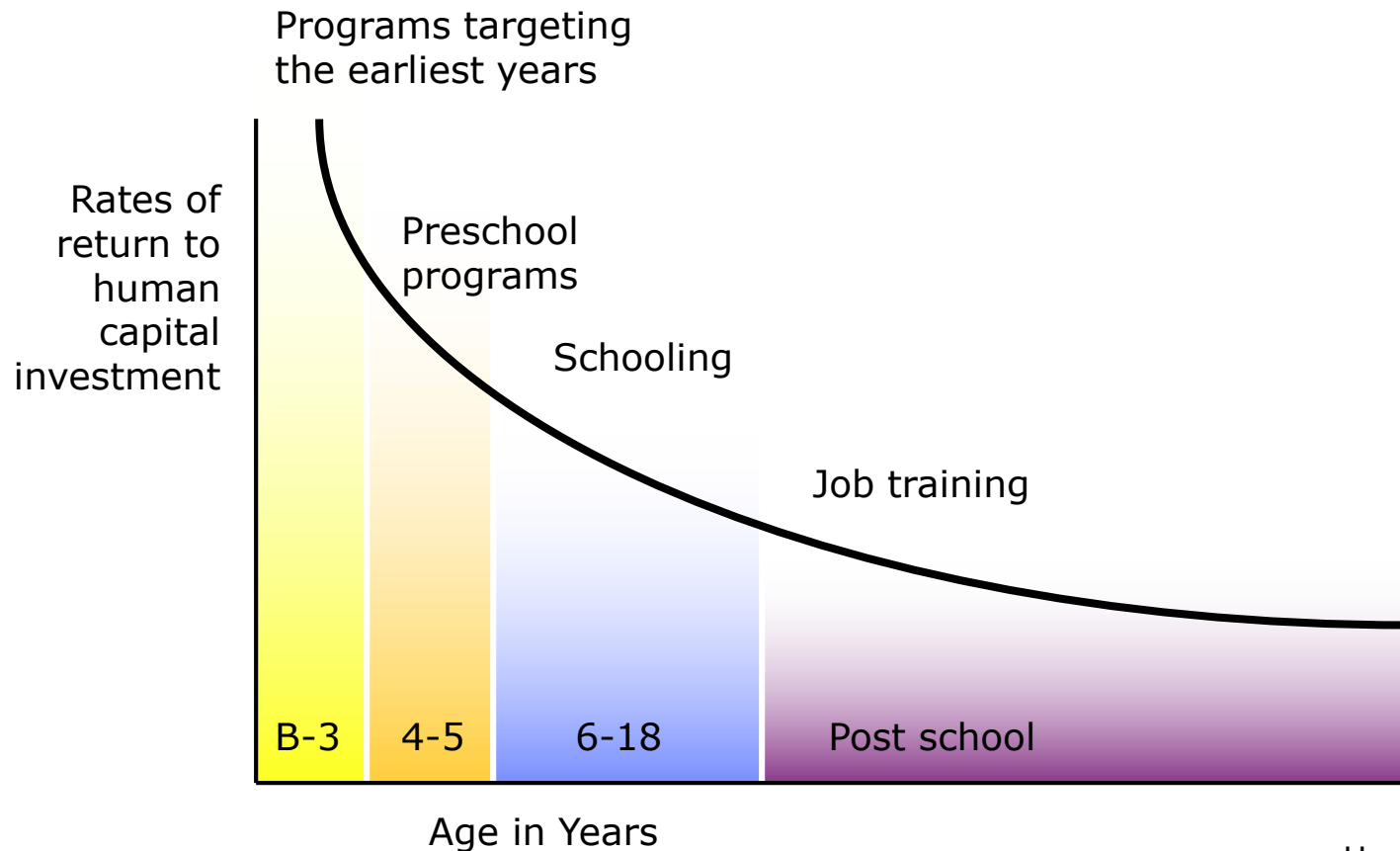
## Innovation in the Early Years

We need to create a system that:

- Builds strong foundations for healthy development
- Invests in early experiences that maximize serve and return interactions and reduce toxic stress

# The Earlier the Investment, the Greater the Return → (7-10%)

## Returns to a Unit Dollar Invested





# WHAT'S HAPPENING NOW AND WHAT'S NEXT?



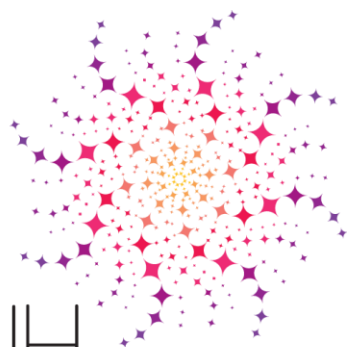
# FOUR HIGHLIGHTS OF WHAT'S HAPPENING

1. SPARK NH AND THE FRAMEWORK FOR ACTION
2. STATE EARLY LEARNING ALLIANCE (SELA)
3. NEW HAMPSHIRE PHILANTHROPY
4. SMART START COALITION



# The Spark NH *Framework for Action*

represents our  
policy priorities  
for the next five  
years.

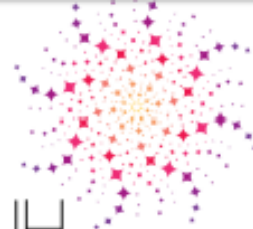


**SparkNH**  
Early Childhood Advisory Council

## A Framework for Action for New Hampshire's Young Children

Spark NH is the Governor-appointed Early Childhood Advisory Council for the State of New Hampshire. These ten recommended actions for New Hampshire's youngest children are the path to realizing its vision:

**SparkNH**  
Early Childhood Advisory Council



**All New Hampshire children and their families are healthy, learning, and thriving now and in the future.**

### Healthy Children and Families

**Goal:** Children and families throughout our state have the best opportunities for early and life-long health.

- ✓ Ensure access to affordable health care for families.
- ✓ Strengthen New Hampshire's capacity to promote healthy social emotional development of infants, toddlers, other young children and their families and to provide mental health services and supports.
- ✓ Develop/Expand community-based programs targeting sources of toxic stress, such as violence, crime, abuse, neglect, extreme poverty, substance abuse and severe caregiver mental illness, and ensure effective treatment for those who need it.

### Positive Early Learning Experiences

**Goal:** Effective learning opportunities are provided in all settings including the home, child care and afterschool programs, preschools and elementary schools from birth through the primary grades.

- ✓ Expand access to proven and effective early childhood education for all infants, toddlers and other young children through grade three.
- ✓ Increase opportunities for learning outside of the school day, including summer.
- ✓ Ensure all children are screened for developmental concerns and receive the services needed to promote their optimal development.

### Strong Families

**Goal:** Families have the skills, basic resources, and supports to promote their children's development and learning starting before birth and continuing through the primary grades.

- ✓ Ensure housing and energy assistance to low-income families.
- ✓ Expand access to proven and effective home visiting and family support programs.
- ✓ Ensure hard work pays by raising the minimum wage, supporting parents' job readiness and expanding access to higher education.

### A Coordinated Early Childhood System

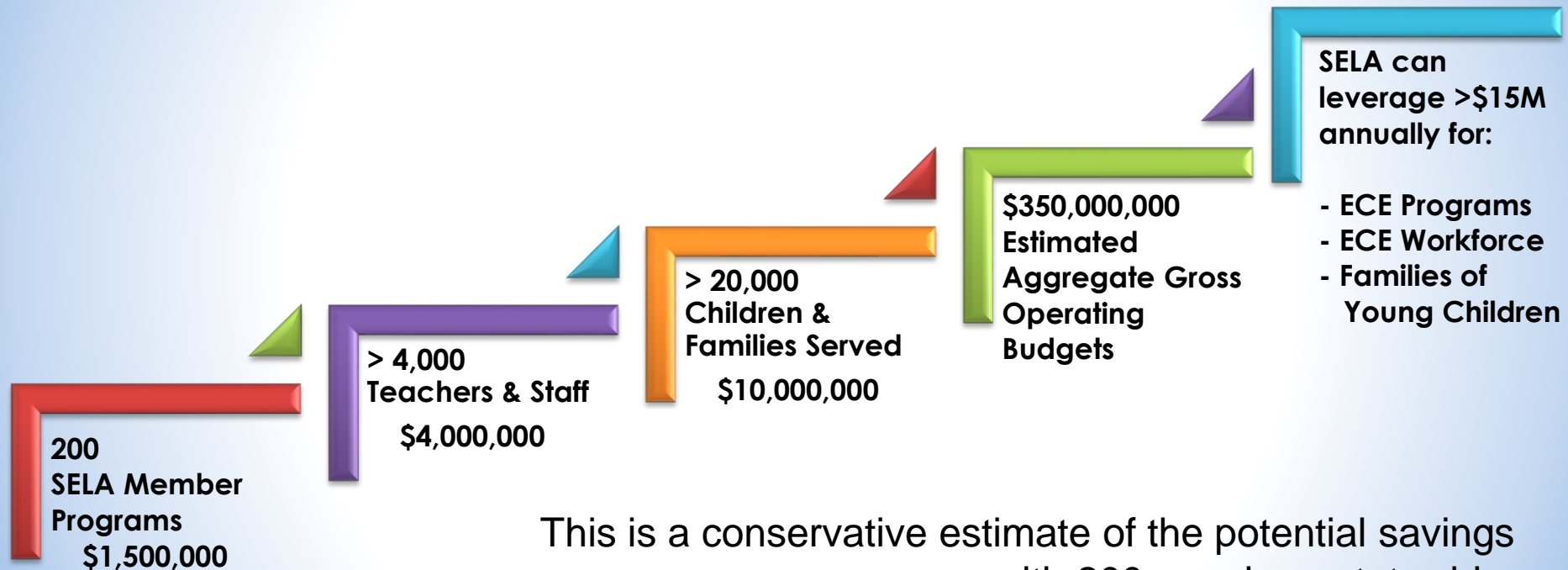
**Goal:** New Hampshire's young children and their families have the benefit of well-coordinated early childhood programs and services that work effectively together on their behalf.

- ✓ Establish an integrated, cross-agency statewide early childhood data system to improve program effectiveness and child and family outcomes.



# State Early Learning Alliance of New Hampshire

## Vision and Impact Statewide in NH



This is a conservative estimate of the potential savings with 200 members statewide.

- ☐ Programs - \$5,000 - 10,000+ annually
- ☐ Employees - \$500 - 3,000+ annually
- ☐ Families - \$500 - 1,000+ annually



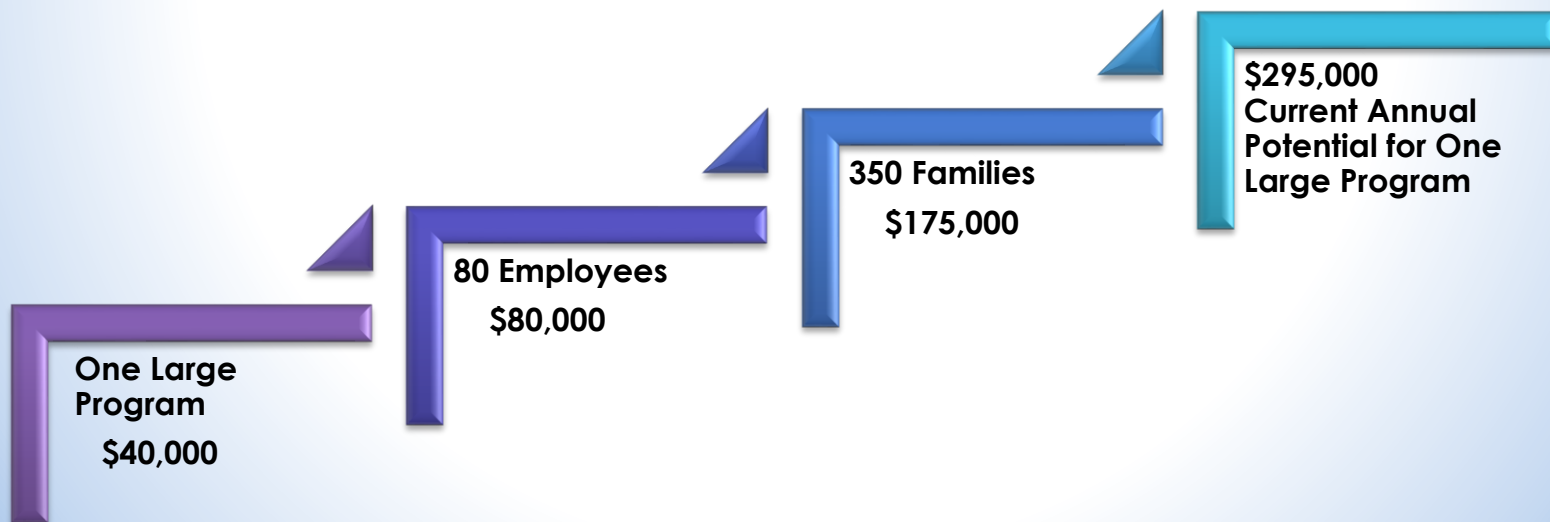
# State Early Learning Alliance

of New Hampshire

*Better. Together. For Children.*

## One Program's Potential

### Rochester Child Care Center





# WHAT'S NEXT?



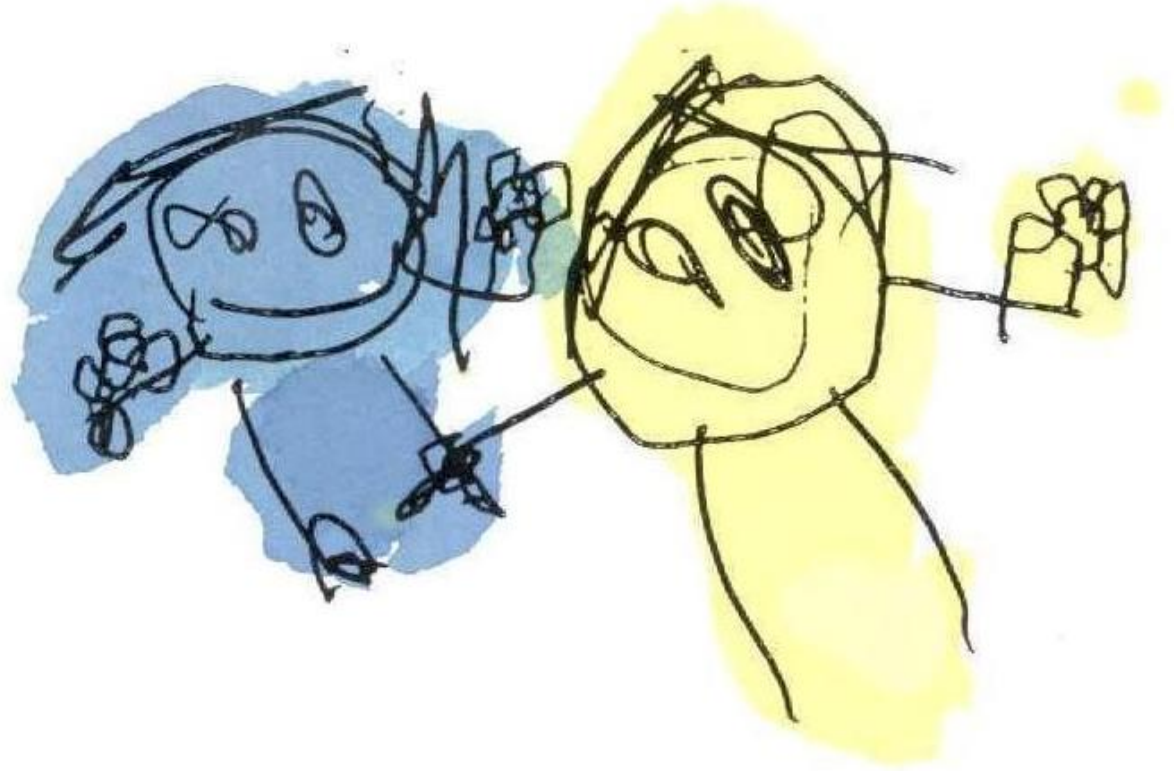


## FOUR HIGHLIGHTS OF WHAT'S NEXT

1. ENACT A QRIS TO INCREASE ACCESS, SUPPORT QUALITY AND GIVE INFORMATION
2. RE-DESIGN EARLY CHILDHOOD GOVERNANCE
3. SMART START COALITION'S PRIORITIES
4. BUILD A "ONE-STOP SHOP" APP/WEBSITE FOR FAMILIES WITH YOUNG CHILDREN



**THANK YOU!**



**SparkNH.com**