



# **What Does It Take to Make Ends Meet in New Hampshire?**

**February 19, 2016  
Concord, NH**

**David Cooper**  
Senior Analyst  
Economic Policy Institute



# EPI's family budget calculator

**Annual income necessary to secure a modest yet adequate standard of living for a two-parent, two-child family, 2014**

Enter city, state, or zip code

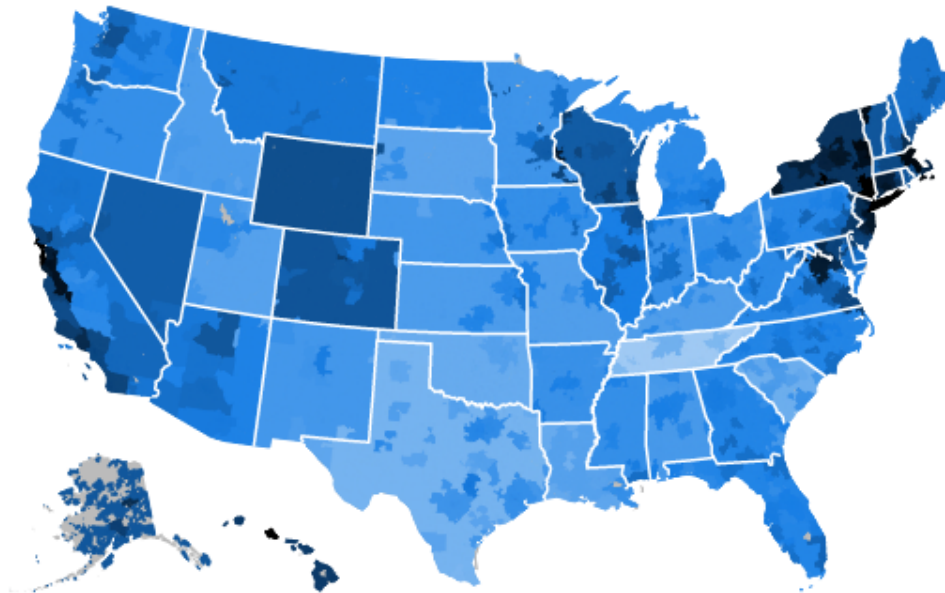
The cost of living in . . . is:



per year



per month



\$49,114 \$106,493

**Note:** Data for all 10 family budget types and all 618 family budget areas are available via EPI's Family Budget Calculator.

Source: EPI Family Budget Calculator (Gould, Cooke, and Kimball 2015)

ECONOMIC POLICY INSTITUTE

Source: EPI Family Budget Calculator: <http://www.epi.org/resources/budget/>



# A modest, but adequate standard of living

## MONTHLY COSTS

2 adults *and* 2 children

**Des Moines/West Des Moines, IA metro area**

HOUSING	\$783
FOOD	\$782
CHILD CARE	\$1,046
Transportation	\$620
HEALTH CARE	\$680
OTHER NECESSITIES	\$756
TAXES	\$645
<b>Monthly Total</b>	<b>\$5,312</b>
<b>Annual Total</b>	<b><u>\$63,741</u></b>

Source: EPI Family Budget Calculator: <http://www.epi.org/resources/budget/>



# A modest, but adequate standard of living

## MONTHLY COSTS

	2 adults <i>and</i> 2 children <b>Des Moines/West Des Moines, IA metro area</b>	2 adults <i>and</i> 2 children <b>Manchester, NH metro area</b>
HOUSING	\$783	\$1,052
FOOD	\$782	\$782
CHILD CARE	\$1,046	\$1,208
Transportation	\$620	\$608
HEALTH CARE	\$680	\$865
OTHER NECESSITIES	\$756	\$886
TAXES	\$645	\$594
<b>Monthly Total</b>	<b>\$5,312</b>	<b>\$5,995</b>
<b>Annual Total</b>	<b><u>\$63,741</u></b>	<b><u>\$71,939</u></b>
		+ 12.9%

Source: EPI Family Budget Calculator: <http://www.epi.org/resources/budget/>



# A modest, but adequate standard of living

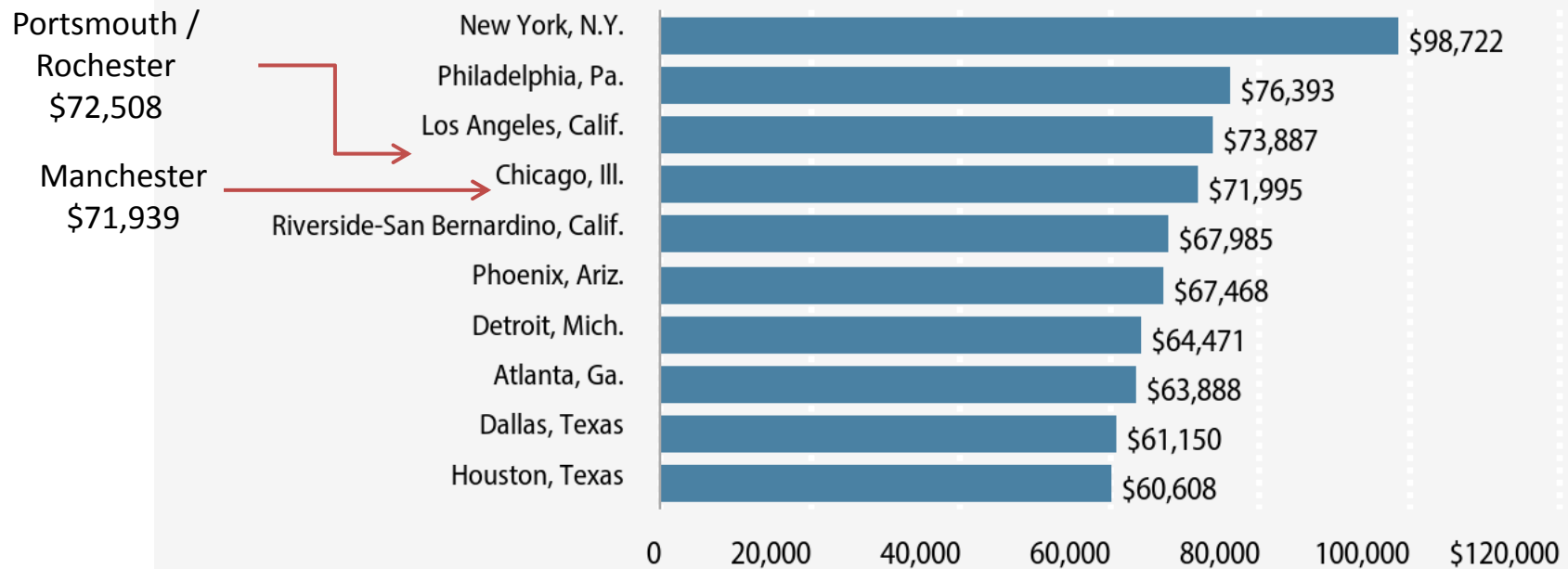
MONTHLY COSTS			2 adults and 2 children Manchester, NH metro area	2 adults and 2 children Portsmouth/ Rochester, NH metro area
🏠 HOUSING	\$783	\$1,052	\$1,065	
🍌 FOOD	\$782	\$782	\$782	
👨‍👩‍👧‍👦 CHILD CARE	\$1,046	\$1,208	\$1,208	
🚌 TRANSPORTATION	\$620	\$608	\$608	
🏥 HEALTH CARE	\$680	\$865	\$883	
🏠 OTHER NECESSITIES	\$756	\$886	\$892	
🕒 TAXES	\$645	\$594	\$603	
<b>Monthly Total</b>	<b>\$5,312</b>	<b>\$5,995</b>	<b>\$6,042</b>	
<b>Annual Total</b>	<b><u>\$63,741</u></b>	<b><u>\$71,939</u></b>	<b><u>\$72,508</u></b>	
		+ 12.9%	+ 13.8%	

Source: EPI Family Budget Calculator: <http://www.epi.org/resources/budget/>



# Cost of living in NH compares with city life

## Annual two-parent, two-child family budgets in 10 largest family budget areas, 2014



**Note:** The largest family budget areas do not necessarily represent the largest metro areas because some large metro areas are divided into more than one family budget area. For instance, the Washington, D.C., metro area contains three family budget areas.

**Source:** EPI [Family Budget Calculator](#) (Gould et al. 2015a)



# Family Budget for Manchester, NH

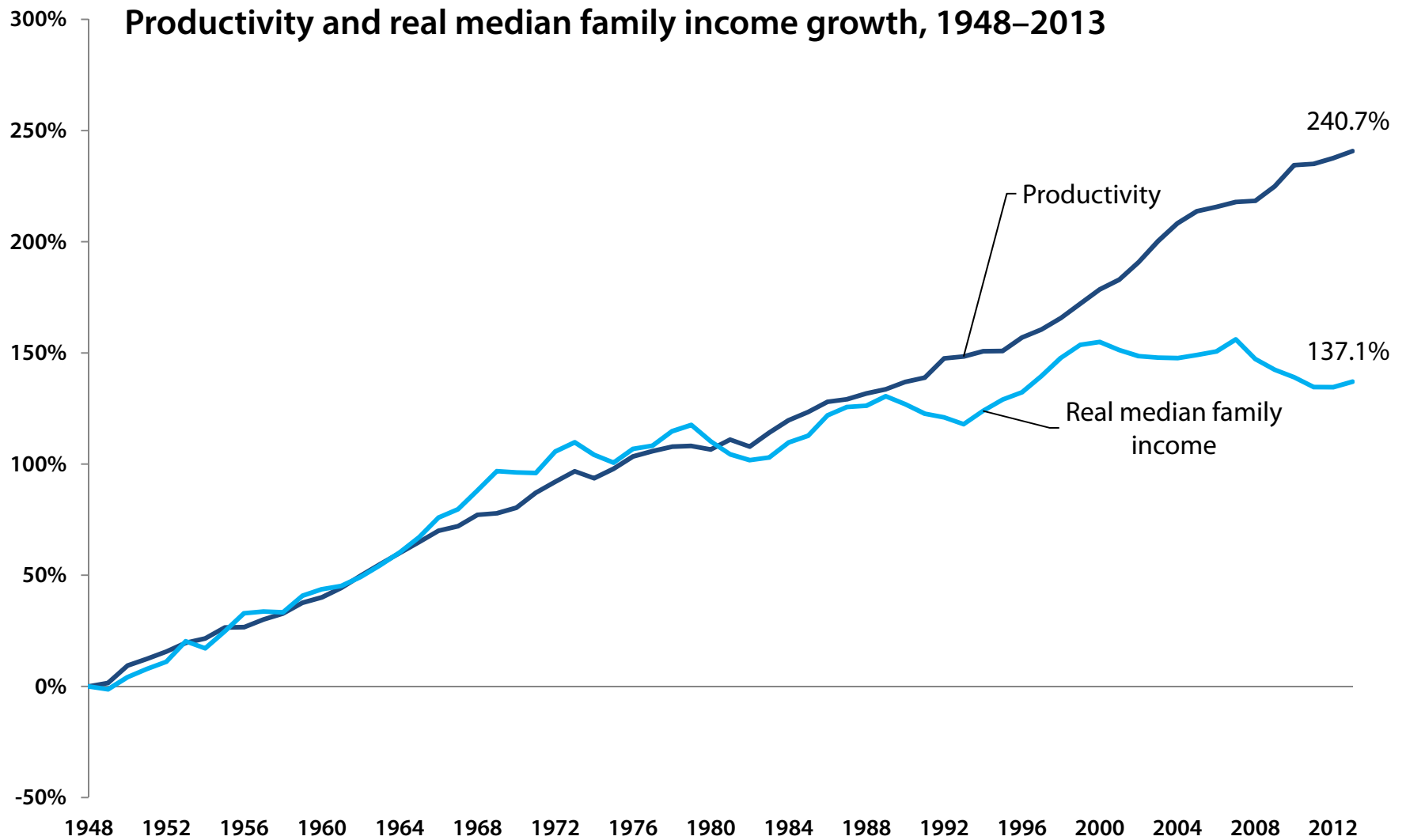
## MONTHLY COSTS

	1 adult <i>and</i> no children <b>Manchester, NH metro area</b>	1 adult <i>and</i> 1 child <b>Manchester, NH metro area</b>	2 adults <i>and</i> 2 children <b>Manchester, NH metro area</b>
HOUSING	\$626	\$1,052	\$1,052
FOOD	\$271	\$399	\$782
CHILD CARE	\$0	\$819	\$1,208
Transportation	\$459	\$464	\$608
HEALTH CARE	\$292	\$432	\$865
OTHER NECESSITIES	\$433	\$701	\$886
TAXES	\$332	\$615	\$594
<b>Monthly Total</b>	<b>\$2,413</b>	<b>\$4,482</b>	<b>\$5,995</b>
<b>Annual Total</b>	<b><u>\$28,961</u></b>	<b><u>\$53,788</u></b>	<b><u>\$71,939</u></b>
Required full-time hourly wage:	\$13.92	\$25.86	\$17.29

Source: EPI Family Budget Calculator: <http://www.epi.org/resources/budget/>



## The benefits of increased productivity over the last 40 years have not gone to the middle class



Source: EP'sI analysis of Current Population Survey Annual Social and Economic Supplement *Historical Income Tables*, (Table F-

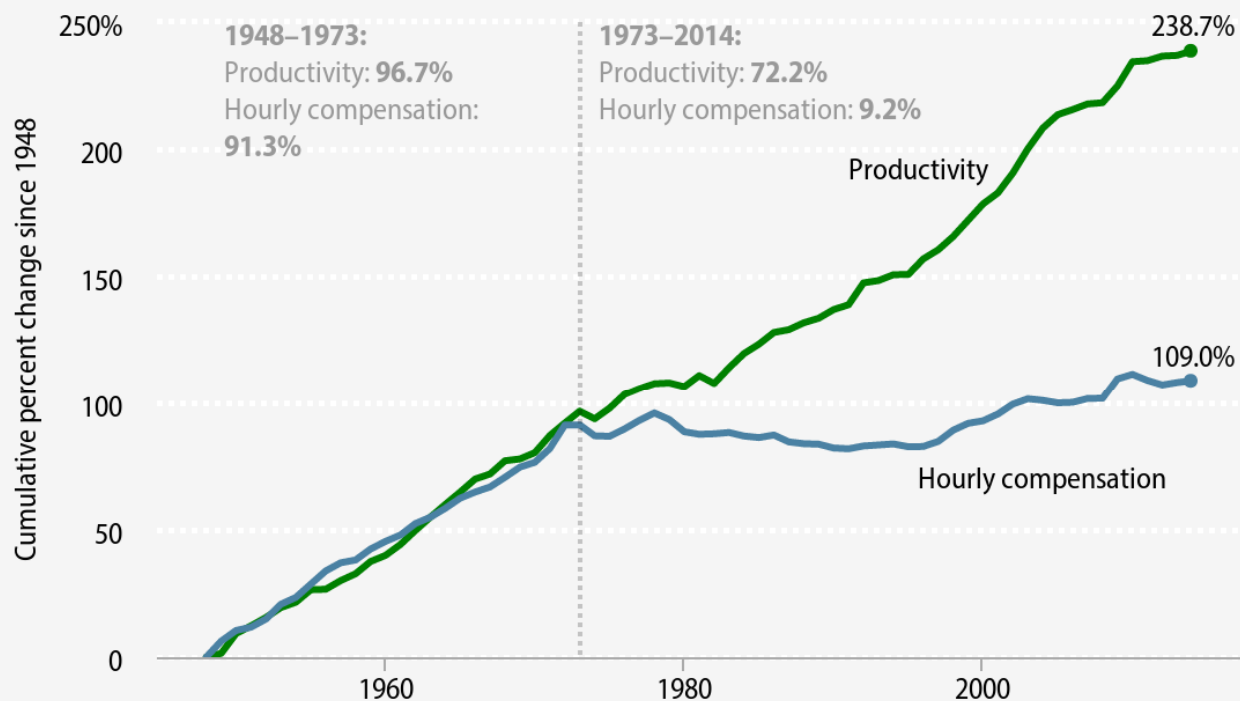




# Stagnant income comes from stagnant wages

## Workers' pay is no longer rising along with productivity

Growth in economy-wide productivity and a typical worker's hourly compensation, 1948-2014



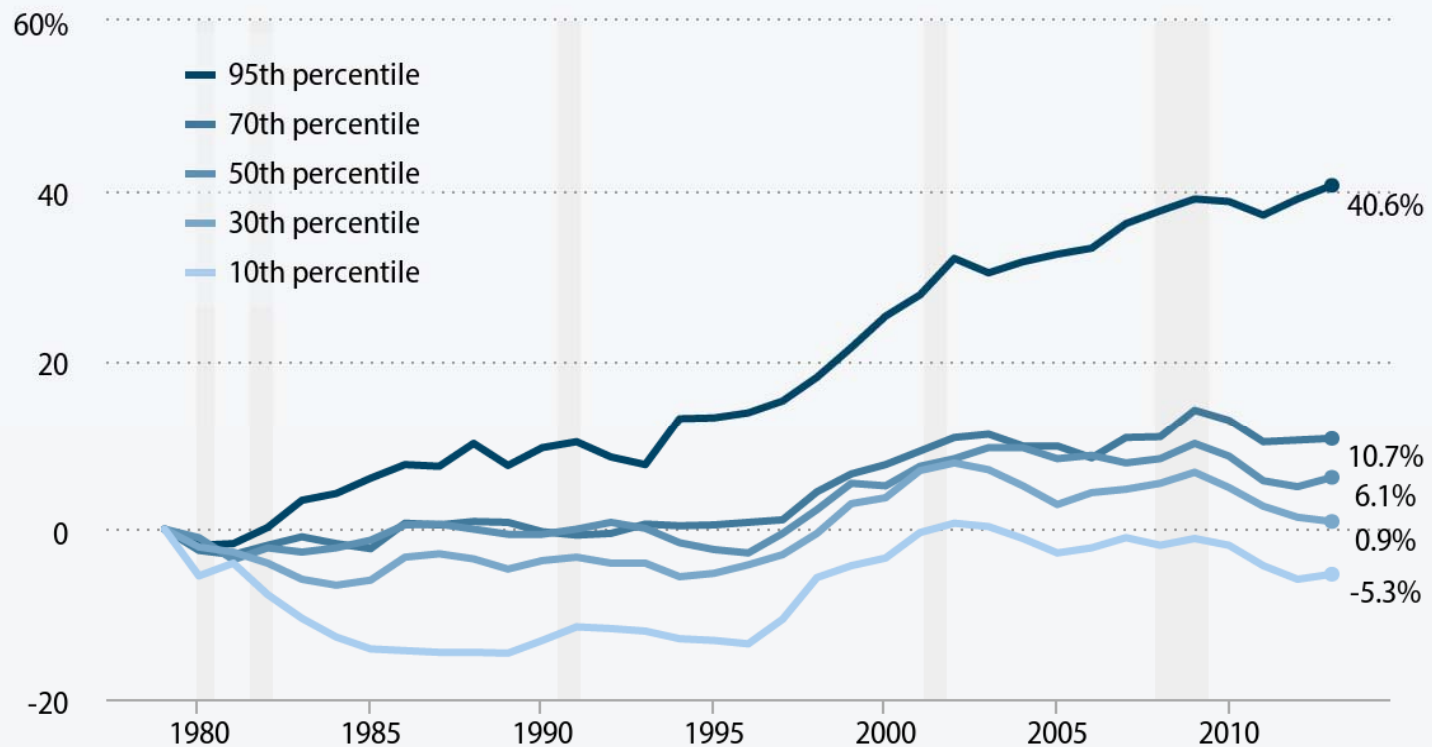
**Note:** Data are for average hourly compensation of production/nonsupervisory workers in the private sector and net productivity of the total economy. "Net productivity" is the growth of output of goods and services minus depreciation per hour worked.

**Source:** Adapted from Figure A in Josh Bivens and Lawrence Mishel, *Understanding the Historic Divergence Between Productivity and a Typical Worker's Pay: Why It Matters and Why It's Real*, EPI Briefing Paper #406, September 2, 2015



# For most, almost no growth in hourly pay

Cumulative change in real hourly wages of all workers, by wage percentile,\* 1979–2013



\* The xth-percentile wage is the wage at which x% of wage earners earn less and (100-x)% earn more.

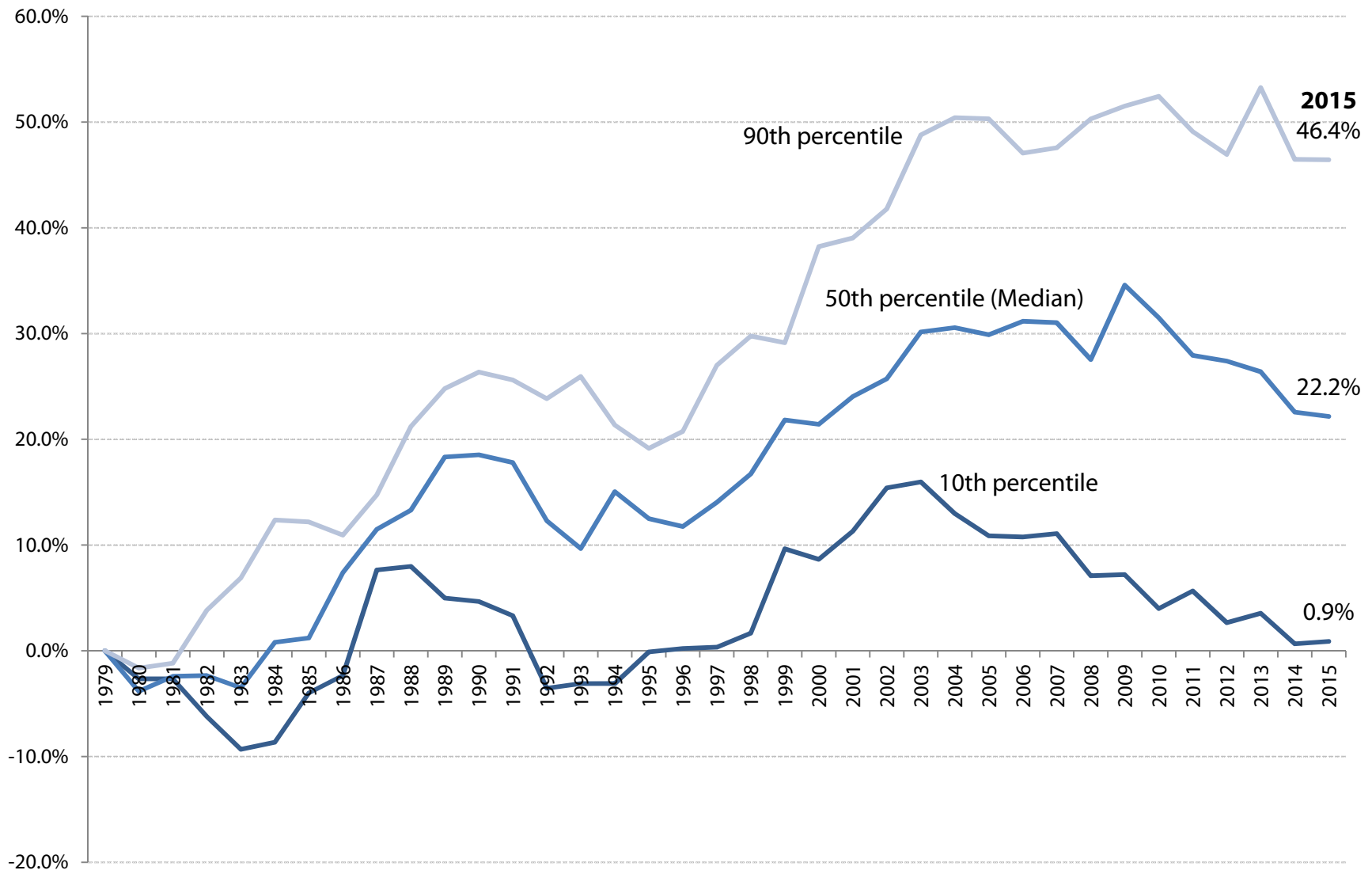
**Note:** Shaded areas denote recessions.

**Source:** EPI analysis of Current Population Survey Outgoing Rotation Group microdata



# The wage picture for New Hampshire

Cumulative change in NH real hourly wages, by decile, since 1979

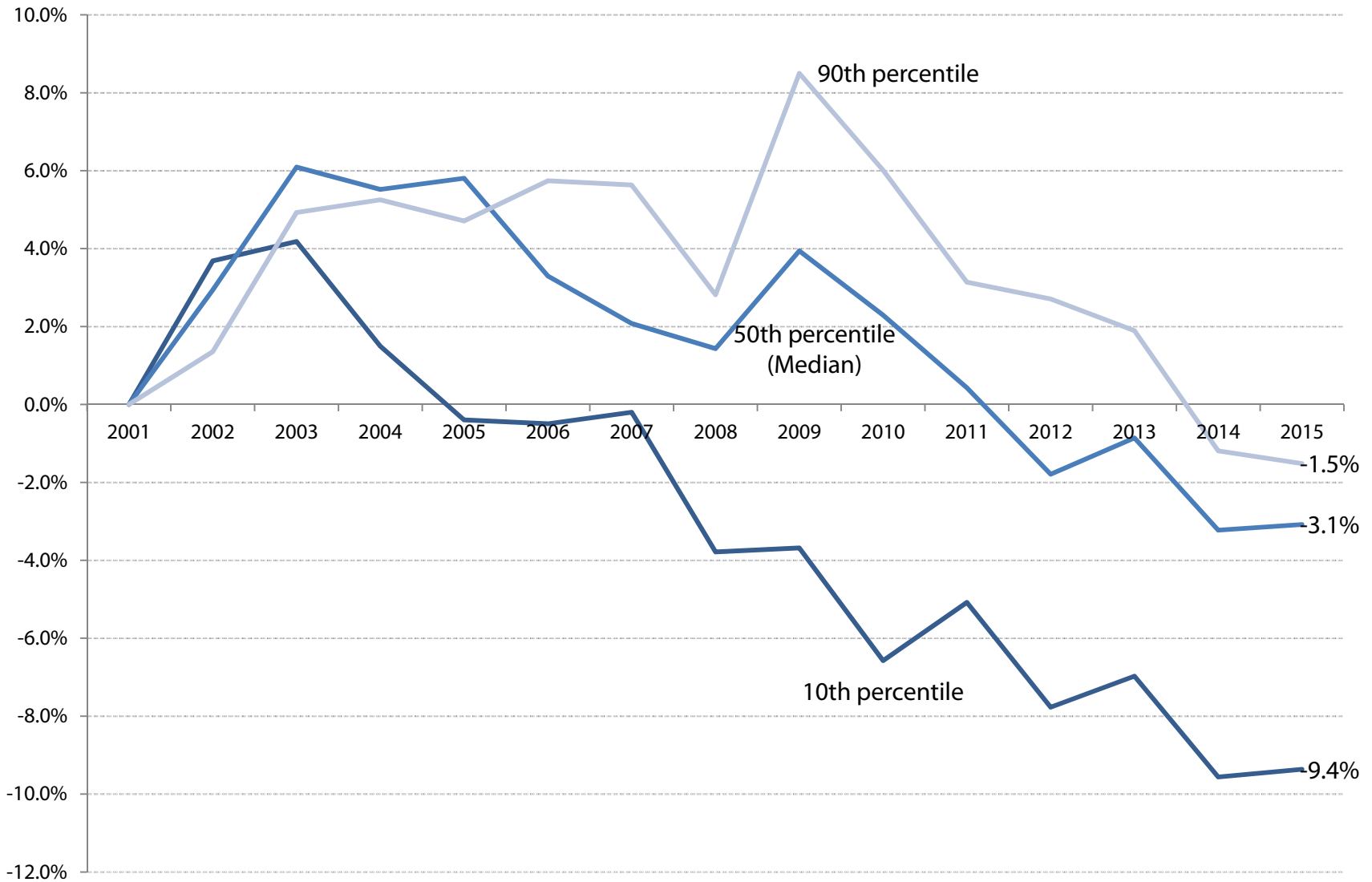


Source: EPI analysis of Current Population Survey Outgoing Rotation Group microdata, 1979-2015



# The 21<sup>st</sup> century has been tough on wages

Cumulative change in real hourly wages in NH, by decile, since 2001

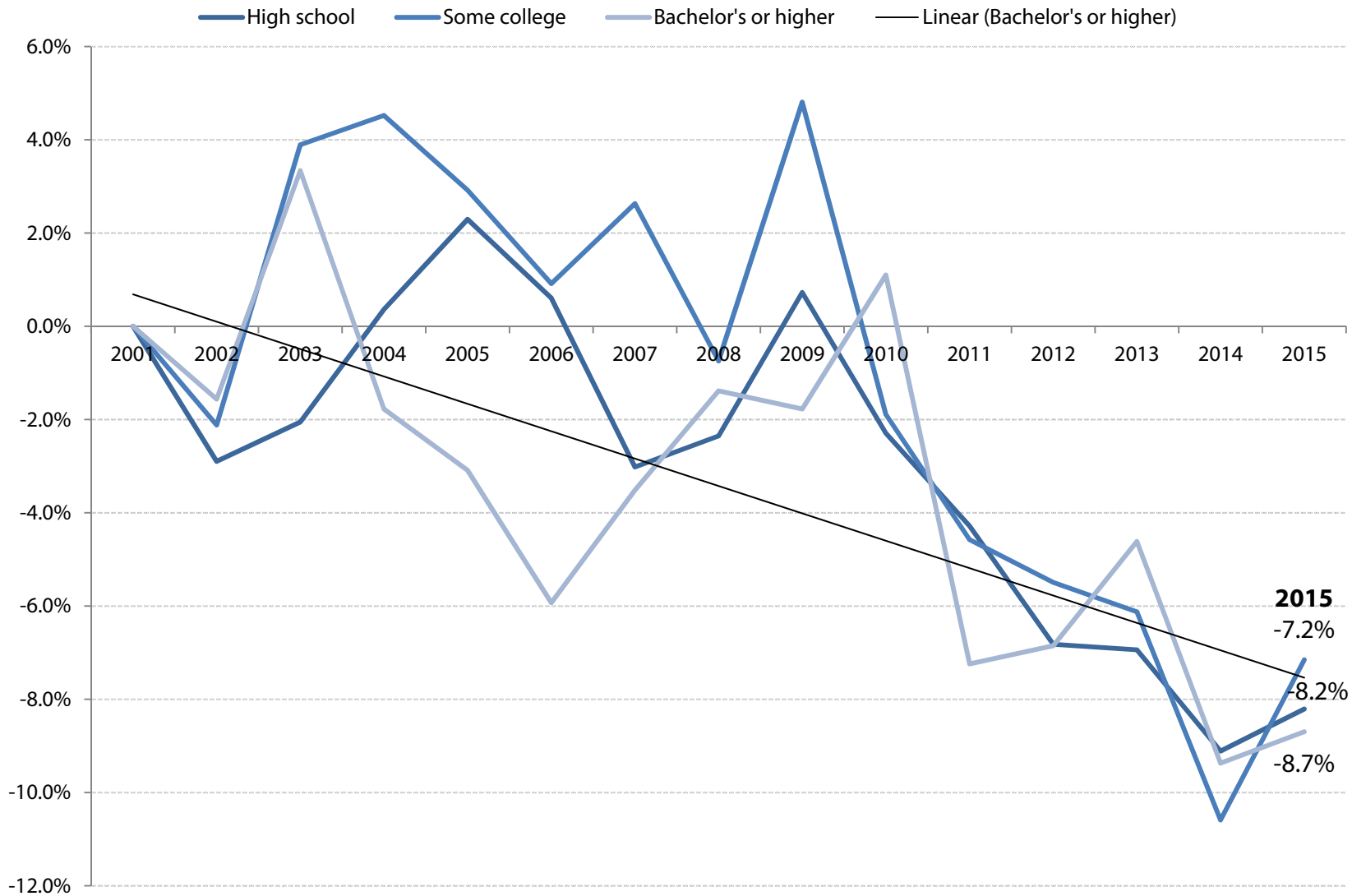


Source: EPI analysis of Current Population Survey Outgoing Rotation Group microdata, 1979-2015



# Education is important, but not a panacea

Cumulative change in NH real median hourly wage, by education, since 2001



Source: EPI analysis of Current Population Survey Outgoing Rotation Group microdata, 1979-2015



---

# For more information

**David Cooper**  
***dcooper@epi.org***

**Economic Policy Institute**

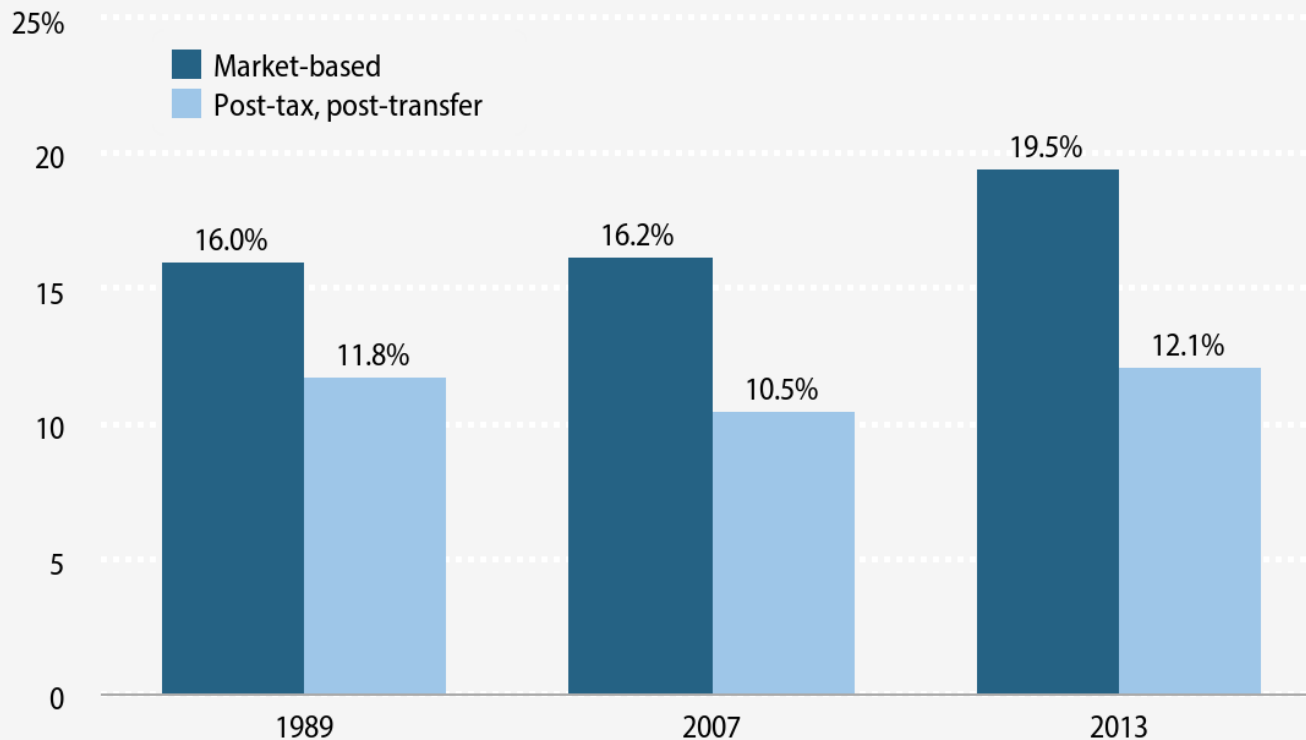
**1333 H Street, NW**  
**Suite 300, East Tower**  
**Washington, DC 20005-4707**  
***202.775.8810***

**[www.epi.org](http://www.epi.org)**



# Safety net has to work harder to maintain status quo

## Non-elderly poverty rates, market-based and post-tax, post-transfer, 1989, 2007, 2013



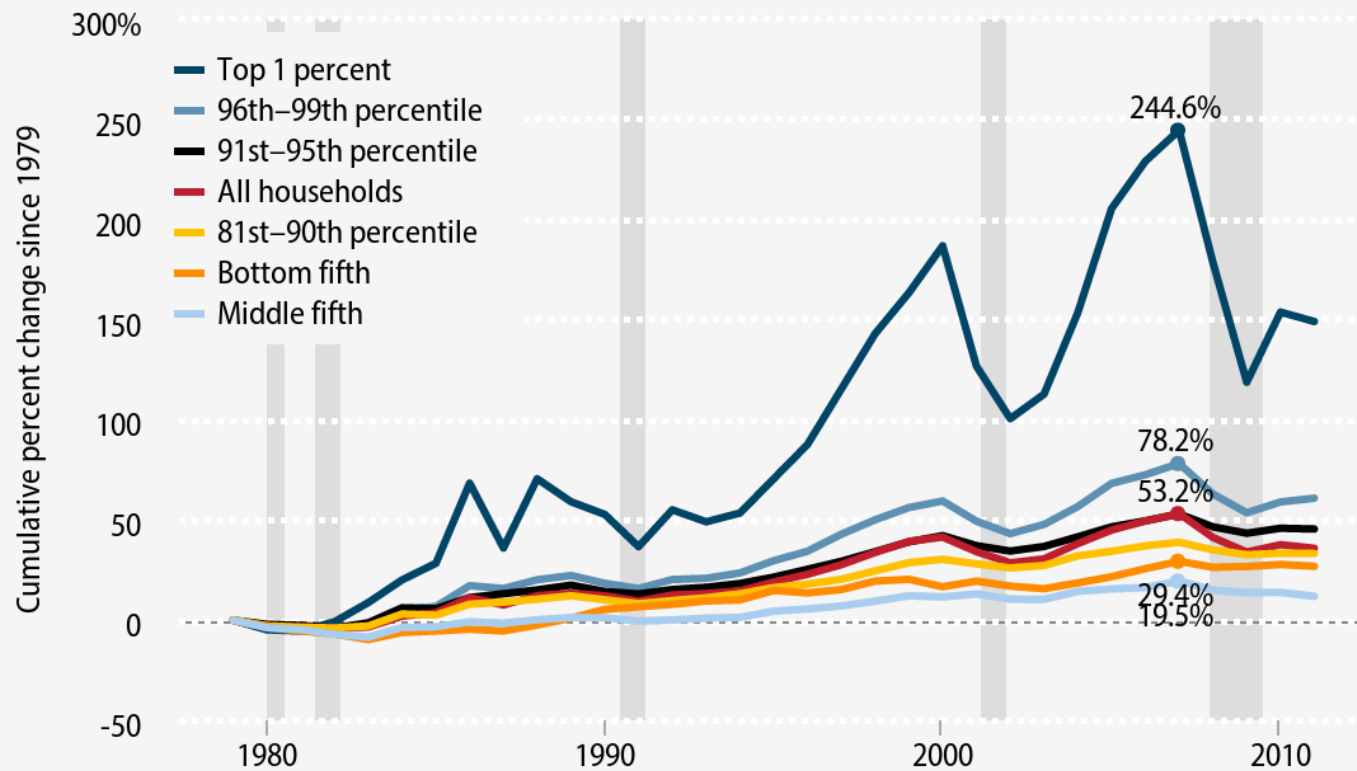
**Note:** Non-elderly population refers to those under age 65. Market-based poverty rates are those based on income earned from work and capital, before factoring in government-provided support. Post-tax, post-transfer poverty rates are those after all government supports (such as cash transfers, in-kind programs, and tax benefits) have been included.

**Source:** EPI analysis of Current Population Survey Annual Social and Economic Supplement



# Where did all that productivity growth go?

## Change in real annual average household income, by income group, 1979-2011



**Note:** Data are for comprehensive income. Shaded areas denote recessions.

**Source:** EPI analysis of data from the Congressional Budget Office (2014)





# Meager earnings growth for most Americans

