

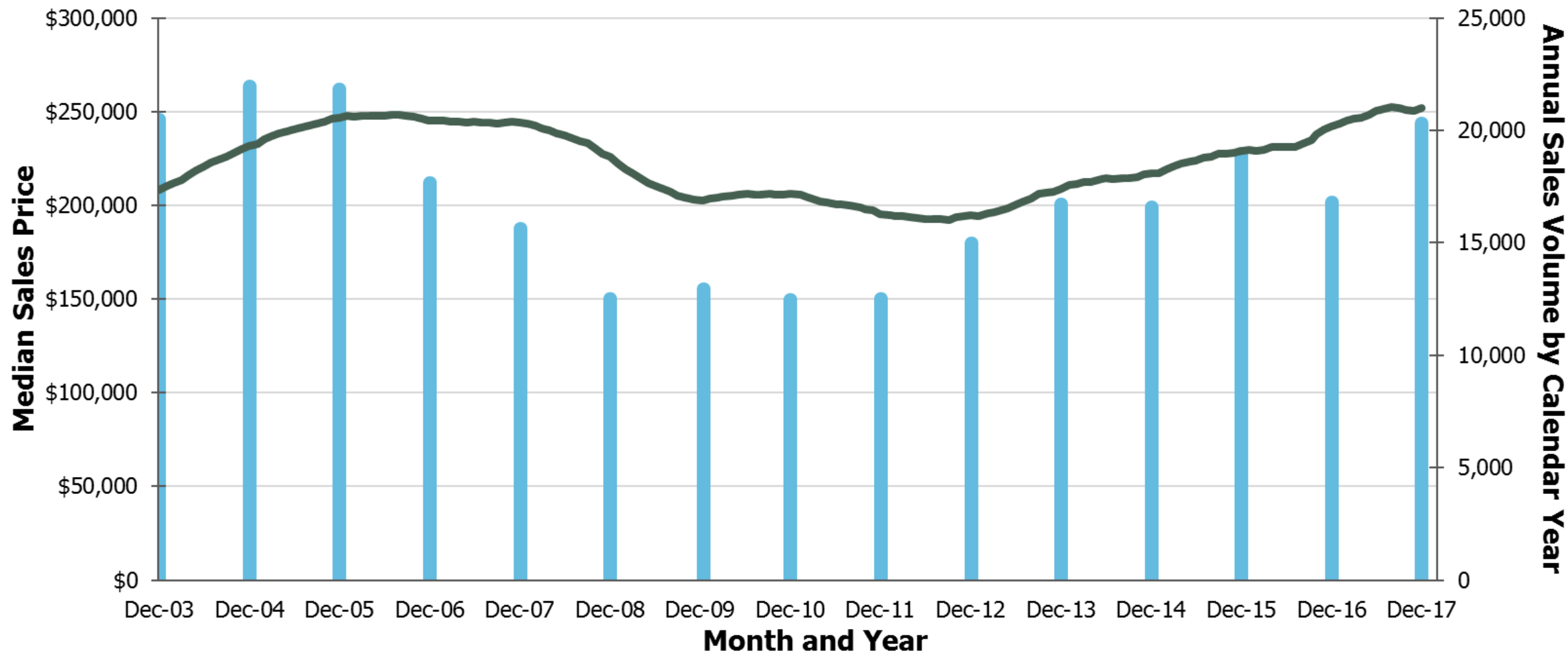
Building Physical Capital: Strengthening Our Economy Through Housing and Transportation

New Hampshire Fiscal Policy Institute
5th Annual Conference

Building a Strong Foundation for a Prosperous Economy
February 23, 2018

New Hampshire Home Sales and Prices

Multiple Listing Services Calendar Year Sales, Median Sales Price 12 Month Rolling Average



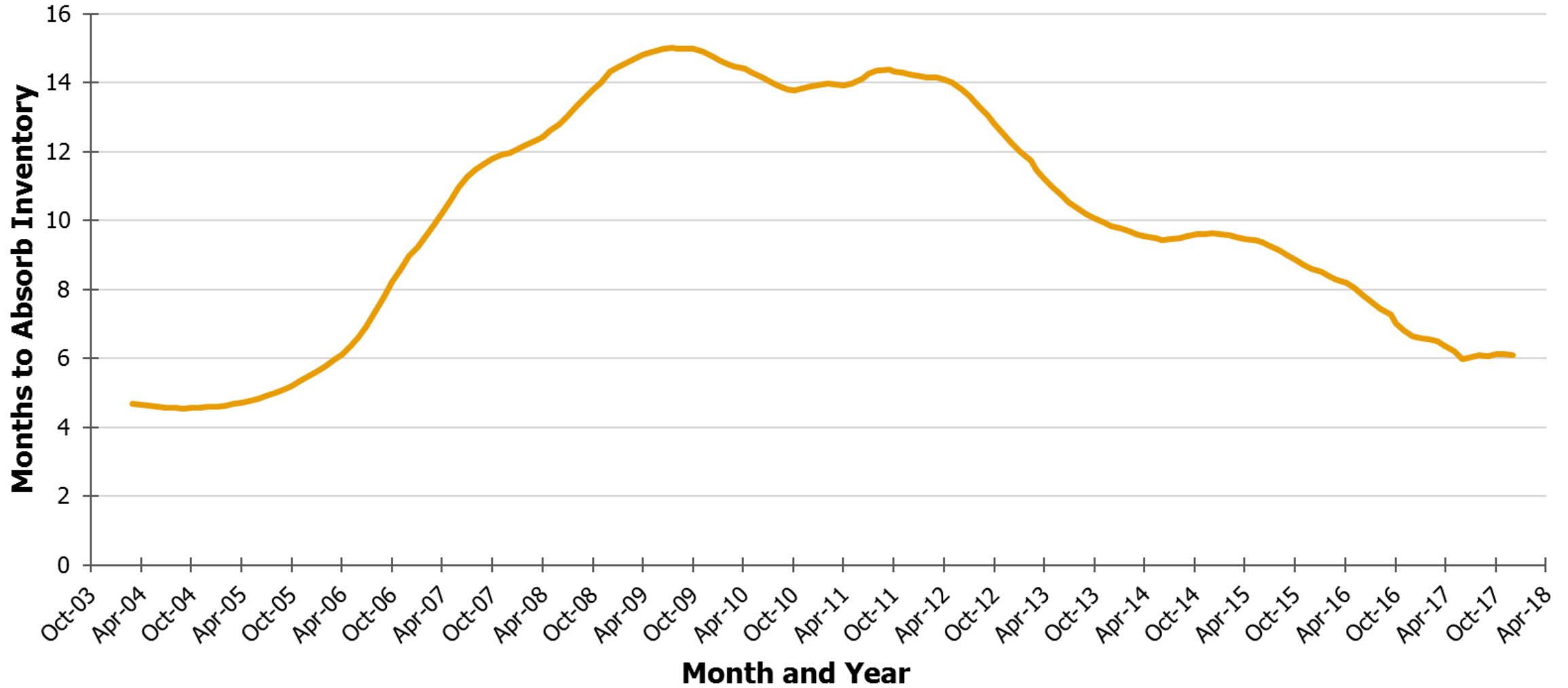
Note: Sales volume for calendar years ending on December 31 of year indicated

Source: New Hampshire Housing Finance Authority, based on information from the Northern New England Real Estate Network

■ Number of Sales — Median Price - Annual Rolling Average

New Hampshire Housing Inventory

Months to Absorb Multiple Listing Services Current Listings at Sales Pace of Prior Twelve Months, Twelve-Month Rolling Average

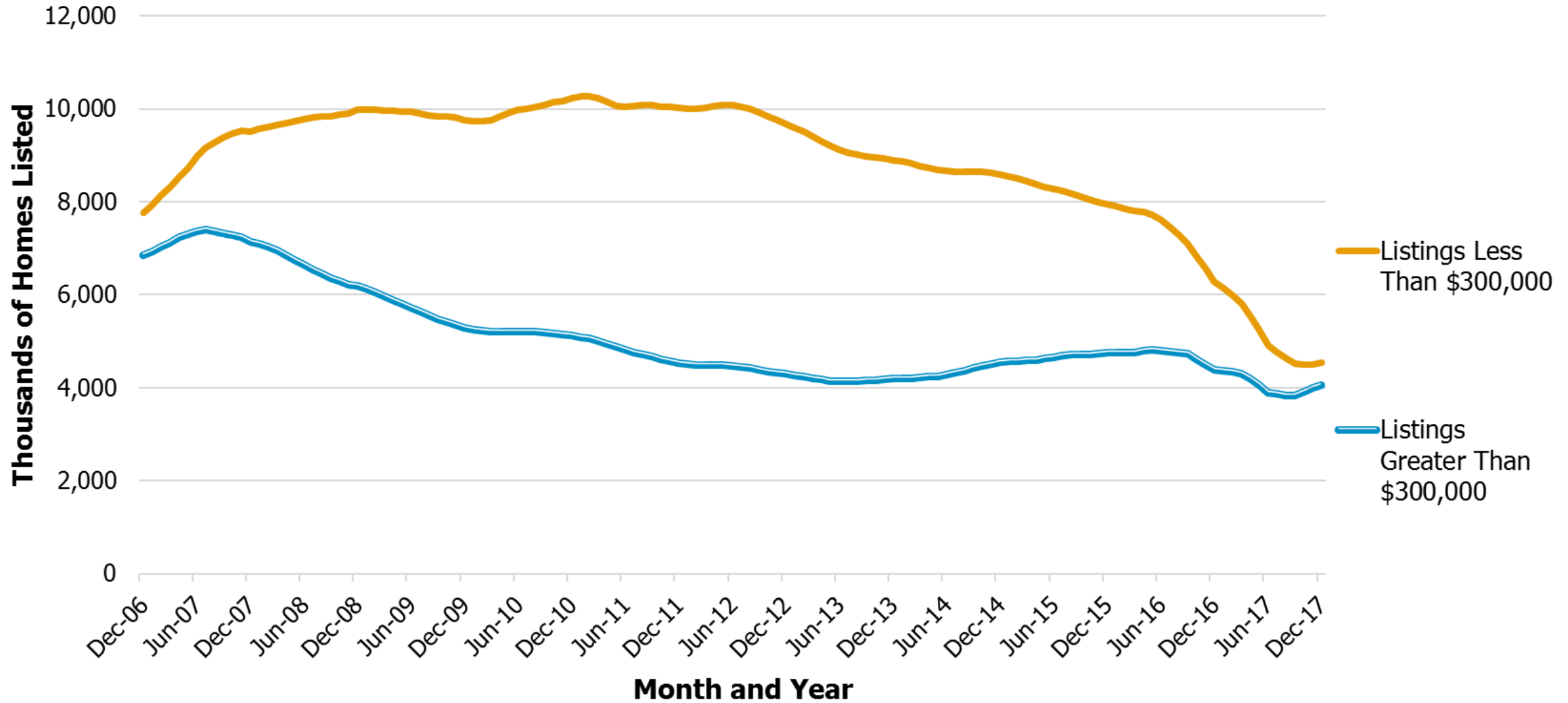


Source: New Hampshire Housing Finance Authority, based on information from the Northern New England Real Estate Network

— Months to Absorb - 12 Month Rolling Average

New Hampshire Home Inventory by Price

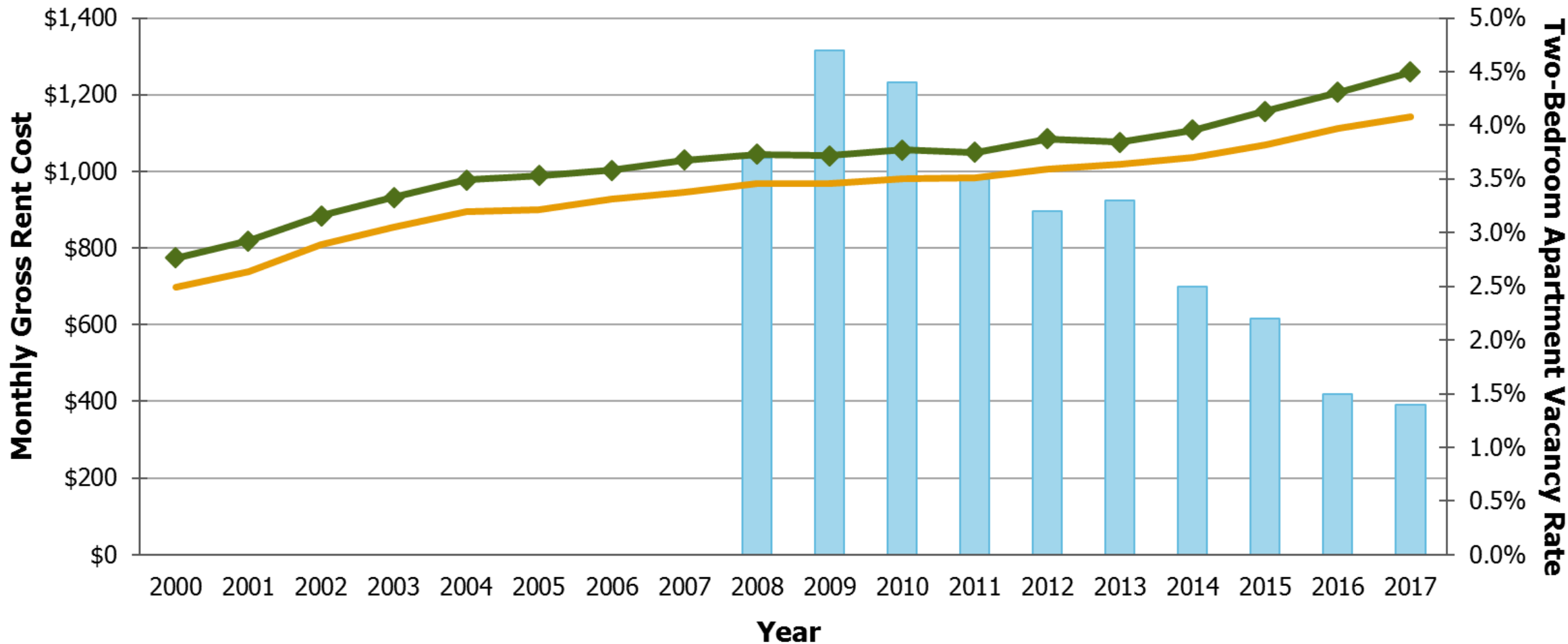
Multiple Listing Services Home Listings by Price, Twelve-Month Rolling Average



Source: New Hampshire Housing Finance Authority, based on information from the Northern New England Real Estate Network

Median Rental Costs and Vacancy Rates in New Hampshire

*Median Monthly Gross Rent for Two-Bedroom Apartments and All Units,
Two-Bedroom Apartment Statewide Vacancy Rate*

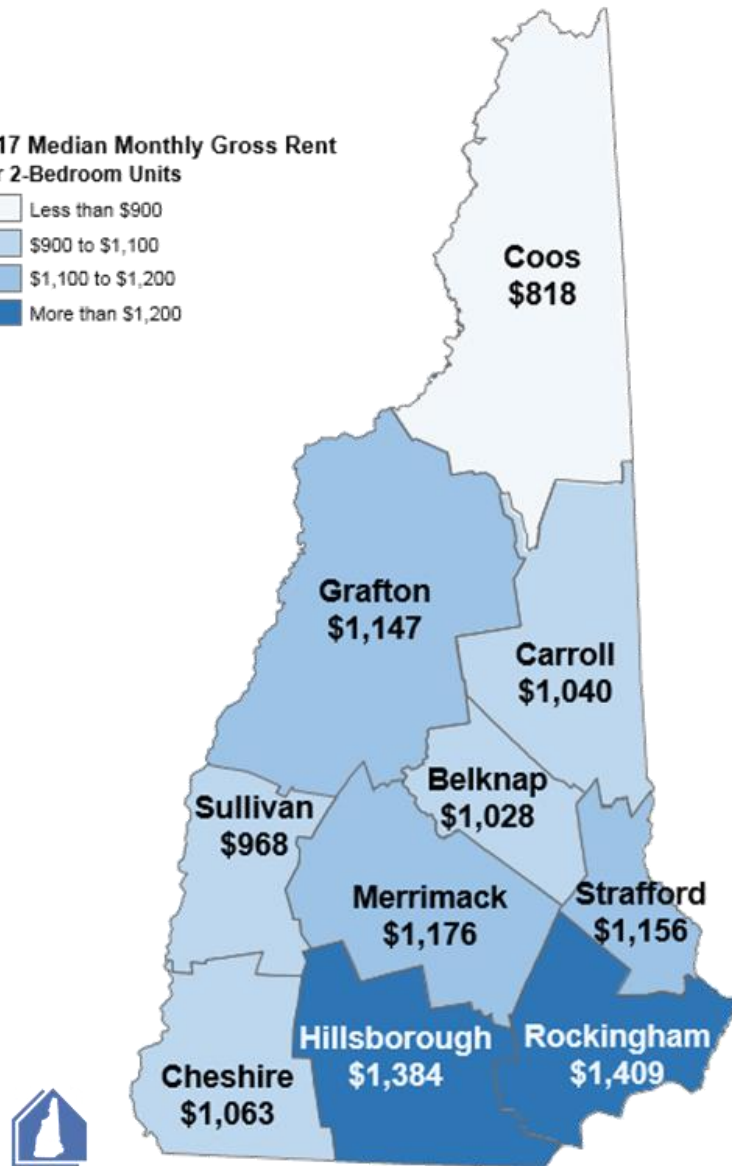
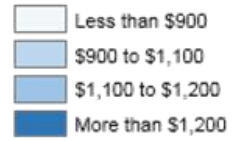


Source: New Hampshire Housing Finance Authority, *2017 Residential Rental Cost Survey*

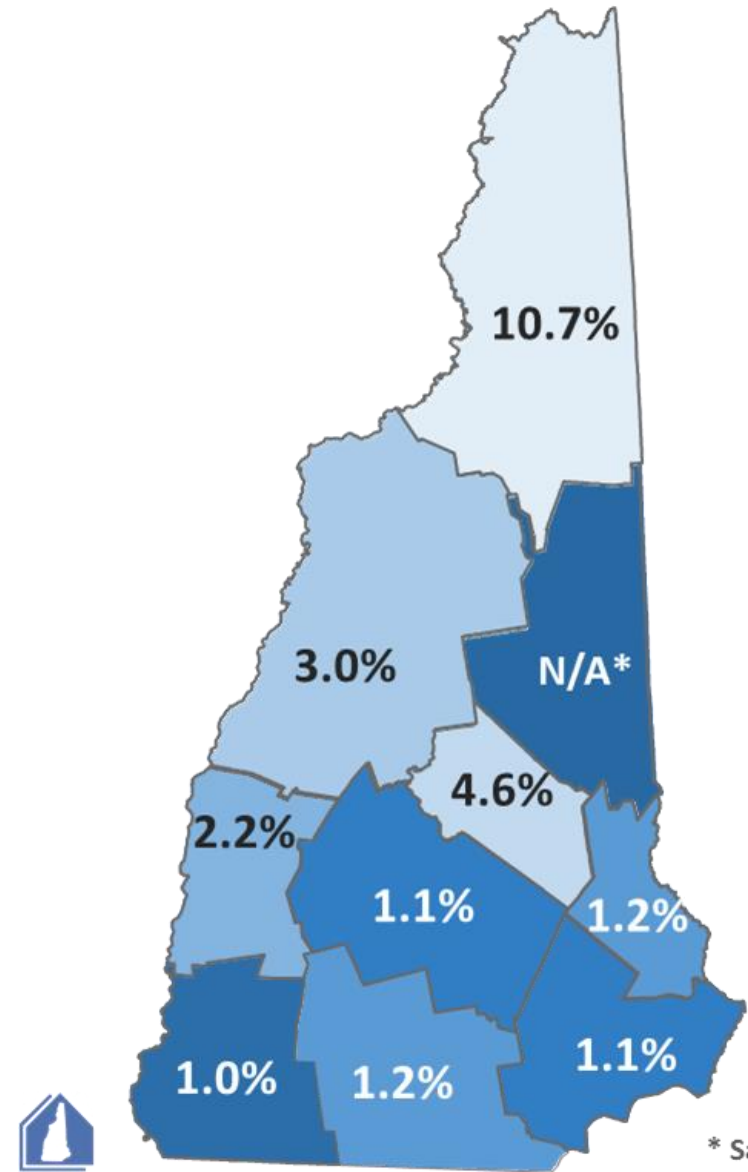
Two-Bedroom Vacancy Rate Two-Bedroom Median Gross Rent All Units Median Gross Rent

Monthly Median Gross Rental Cost

2017 Median Monthly Gross Rent
For 2-Bedroom Units



Vacancy Rate (2 Bedroom Units)

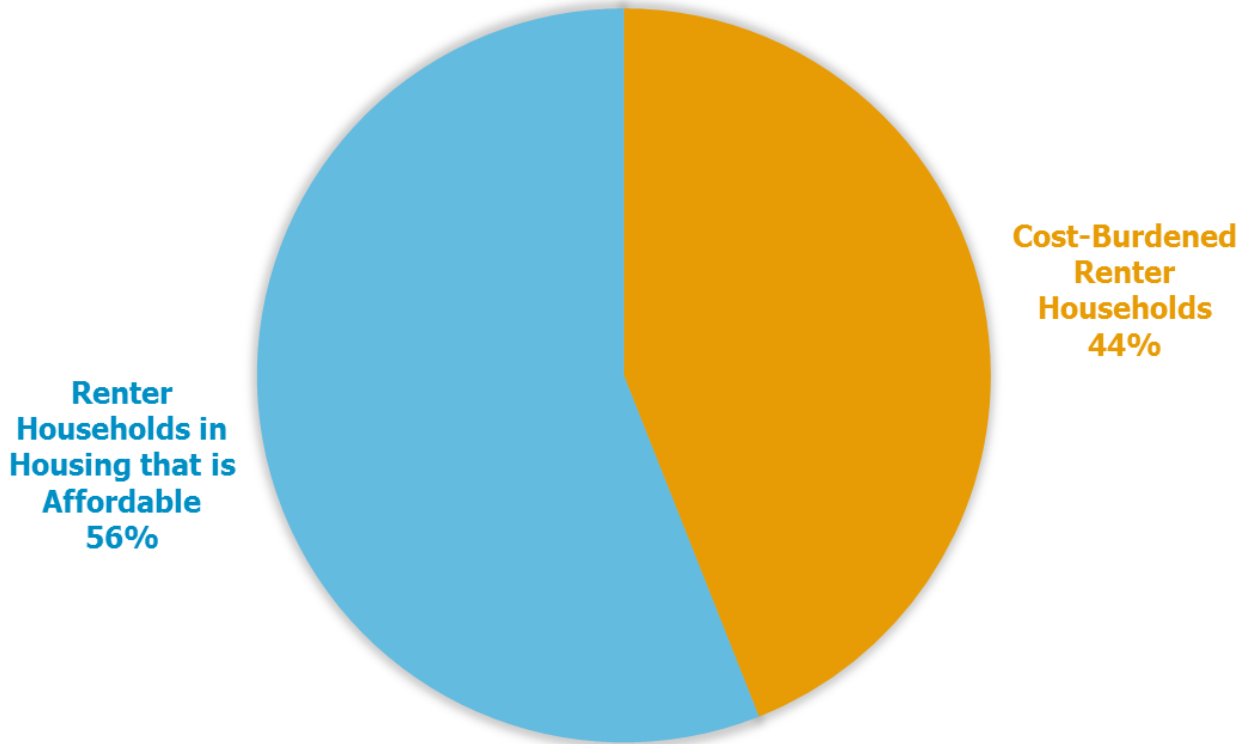


Source: New Hampshire Housing Finance Authority, *2017 Rental Cost Survey*

Affordability as a Percent of All Rental Households

Rental Households Paying 30 Percent or More of Their Income in Rent

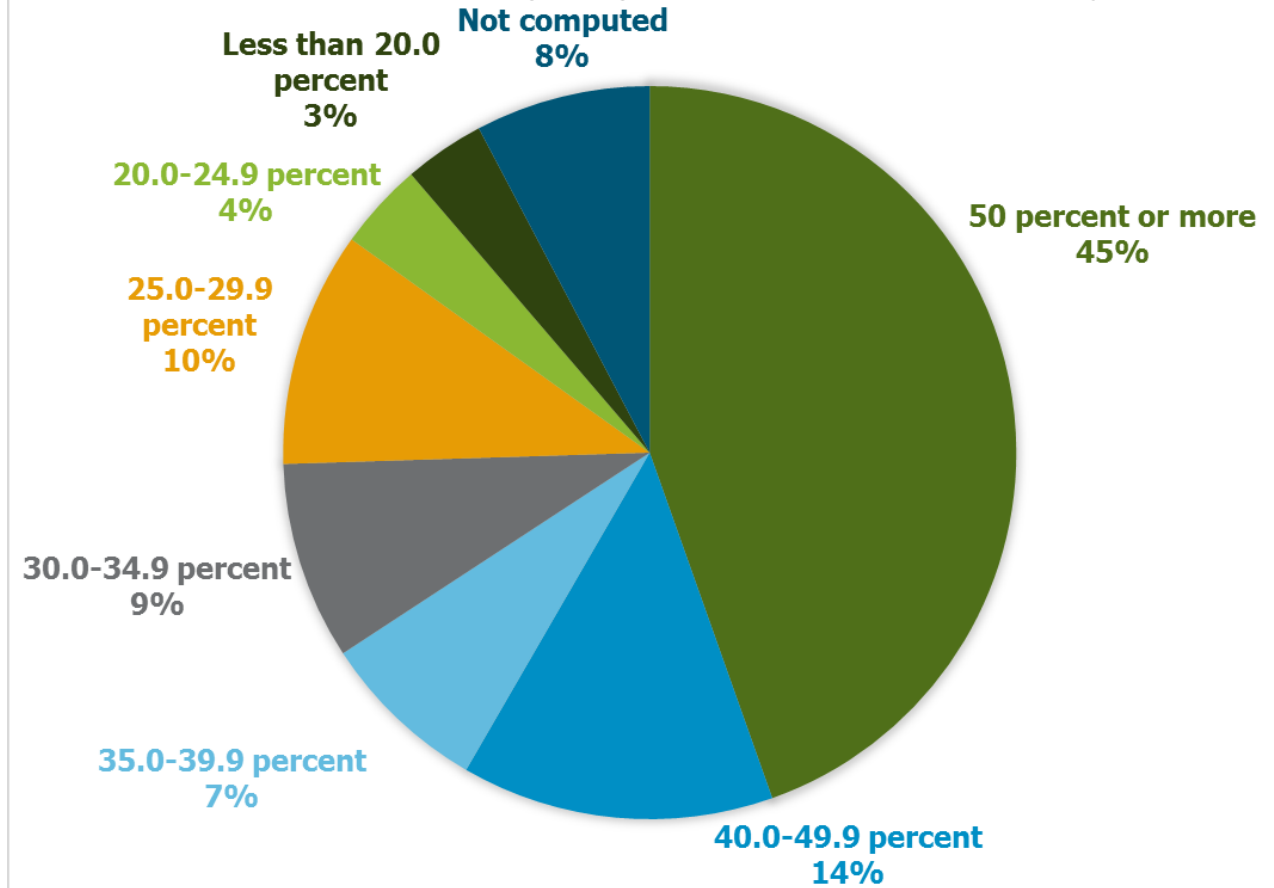
Source: New Hampshire Housing Finance Authority



Gross Rent as a Percentage of Household Income

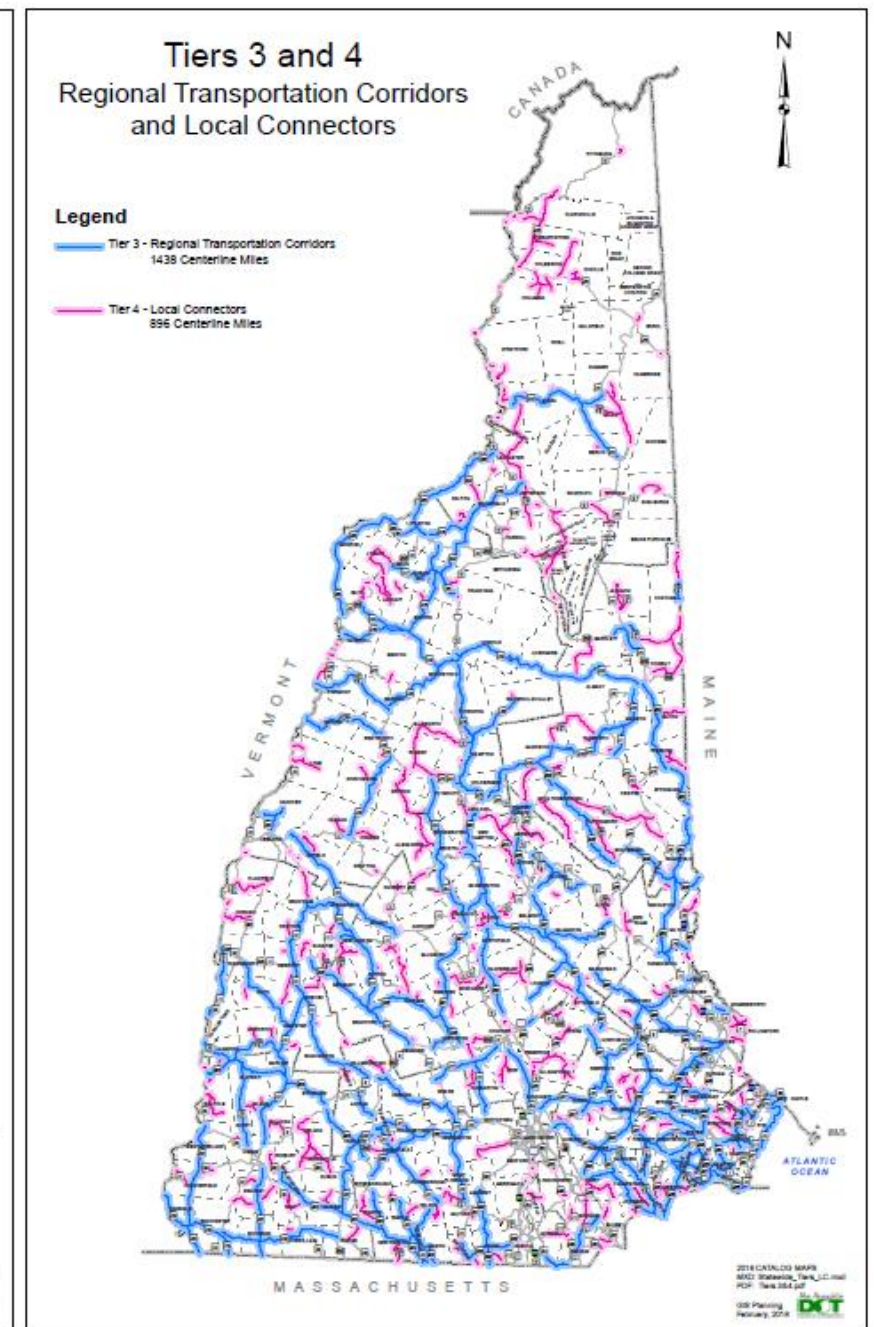
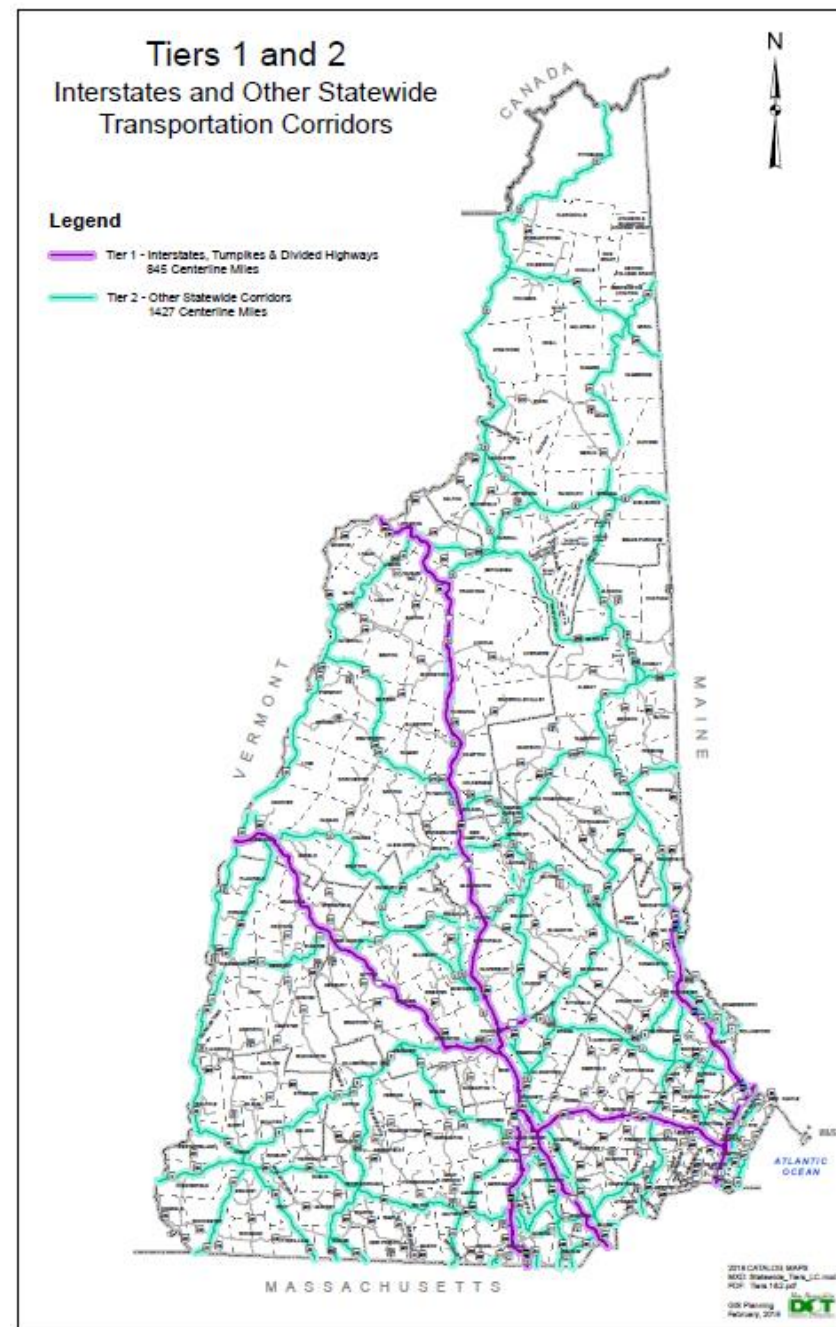
Renter Households With Less Than \$35,000 Per Year in Income

Source: American Community Survey, 2016 One-Year Estimates, New Hampshire



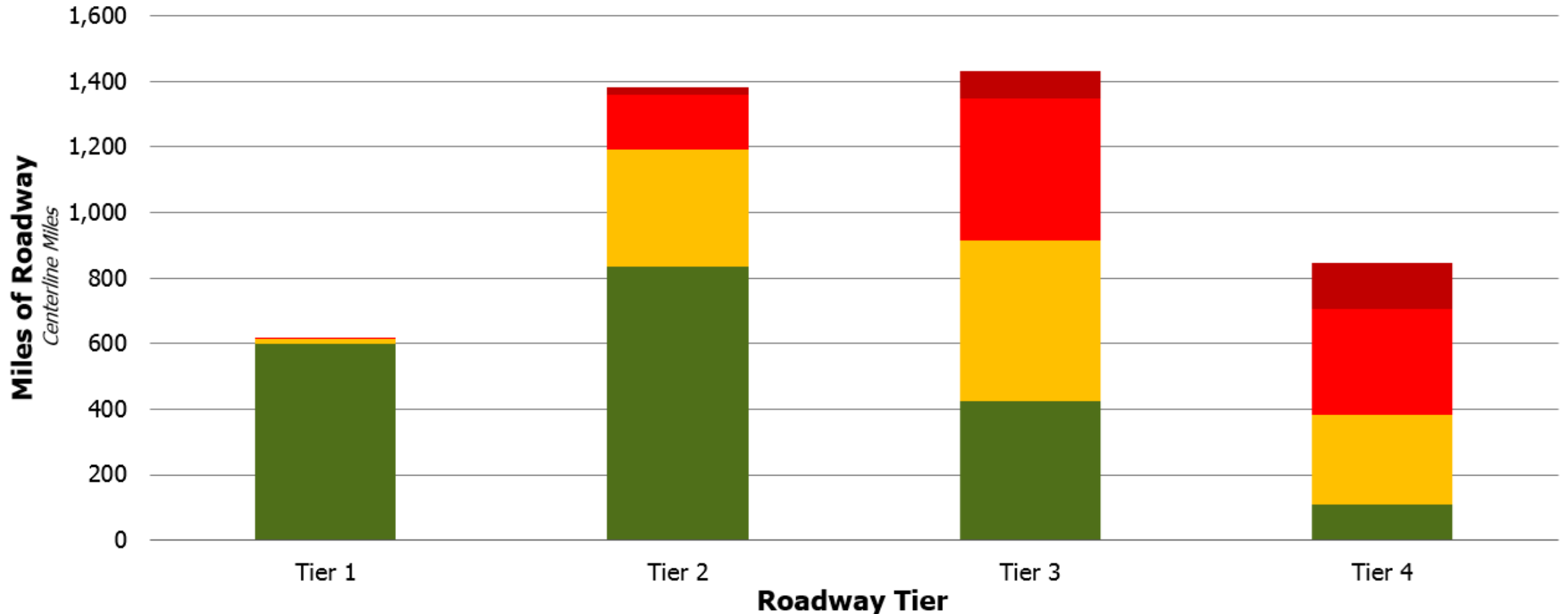
State Roadways

- Tier 1: Interstates, divided limited-access highways, and turnpikes
- Tier 2: Higher traffic volume and higher speed, major corridors to regions
- Tier 3: Moderate speeds and traffic volume for connectivity within regions
- Tier 4: Secondary highways, unnumbered State roads, low speed and low traffic volume for connections within or between communities



New Hampshire State Road Conditions

Pavement Conditions by Mile, based on the International Roughness Index



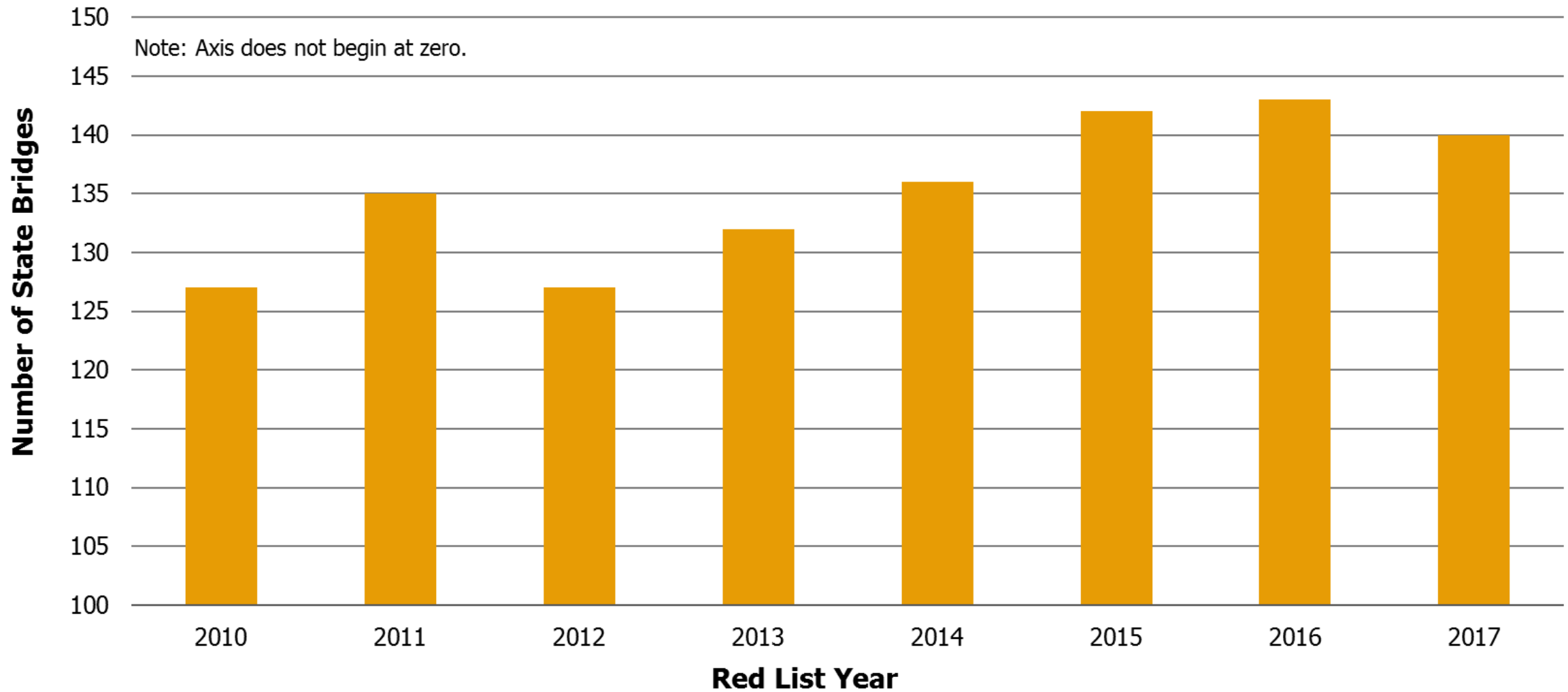
Notes: Ramps and gravel roads not rated; urban compact miles maintained by municipalities not included; collections conducted during 2016 except non-numbered National Highway System routes collected in 2015

Source: New Hampshire Department of Transportation

■ Good ■ Fair ■ Poor ■ Very Poor

Structurally Deficient State Bridges in New Hampshire

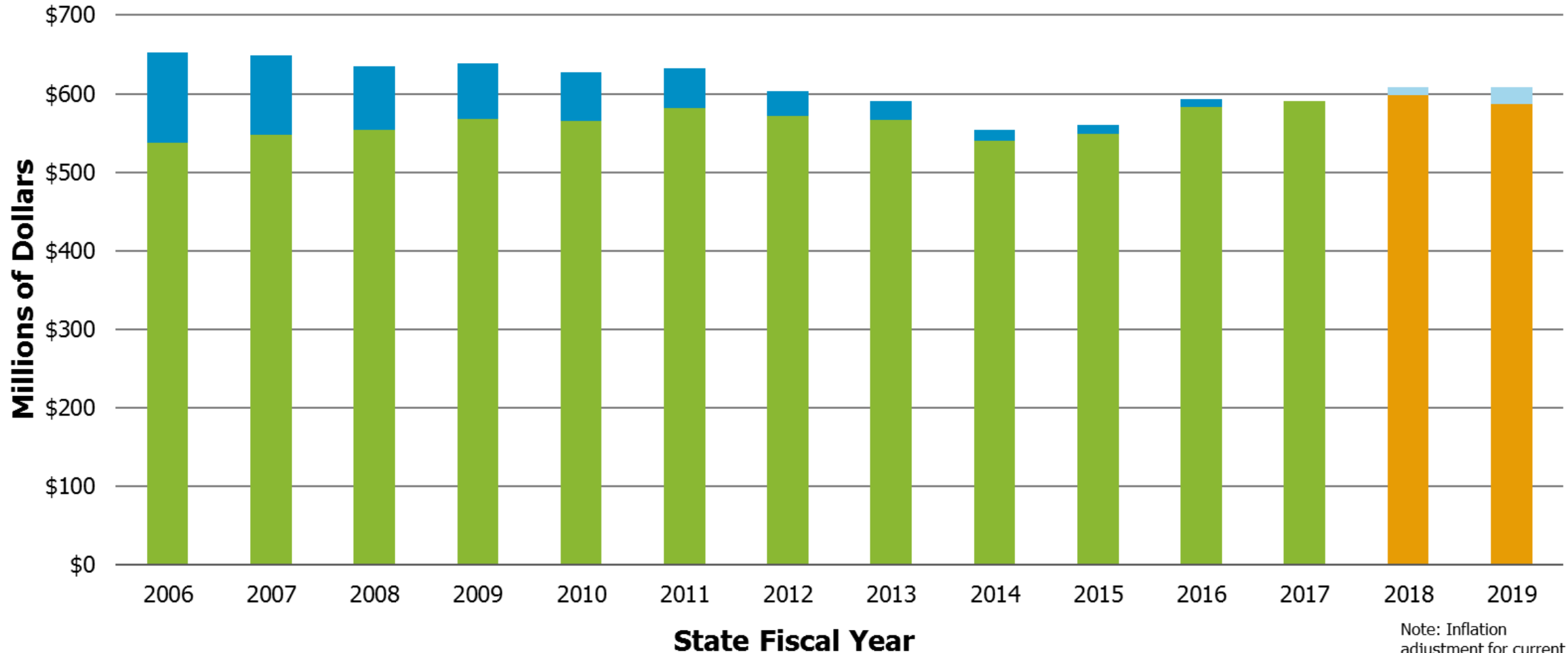
Bridges on the State Red List's Revised Definition



Note: Prior versions of the Red List included other bridges now excluded in the new definition
Source: New Hampshire Department of Transportation

Transportation Funding in the State Budget

Millions of Dollars in New Hampshire's Operating Budget, Inflation-adjusted



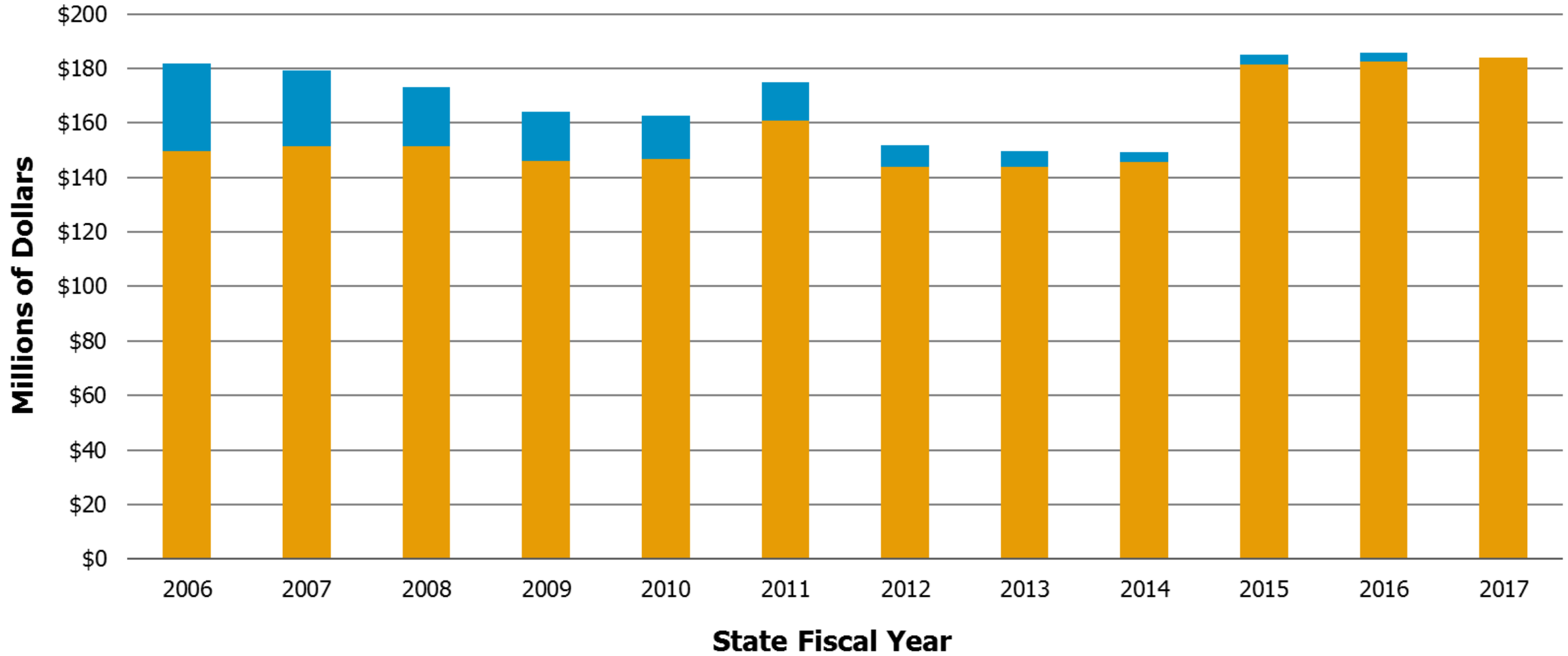
Sources: New Hampshire State Operating Budgets (HB 1 in odd-numbered year Legislative Sessions; HB 144 in 2017); U.S. Bureau of Labor Statistics, Consumer Price Index-Urban, Northeast; Federal Open Market Committee, December 13, 2017

■ All State Budget funds ■ Inflation-adjustment to SFY 2017 dollars

Note: Inflation adjustment for current State Operating Budget based on Federal Reserve projections

Motor Fuels Tax Revenue

Restricted and Unrestricted New Hampshire Revenue, Inflation-adjusted



Sources: New Hampshire Comprehensive Annual Financial Reports; U.S. Bureau of Labor Statistics, Consumer Price Index-Urban, Northeast

■ Motor Fuels Tax

■ Inflation-Adjustment to 2017

Building Physical Capital: Panel Discussion

New Hampshire Fiscal Policy Institute
5th Annual Conference
Building a Strong Foundation for a Prosperous Economy
February 23, 2018