



COMMUNITY DEVELOPMENT FINANCE AUTHORITY

SUPPORTING THE CREATION OF STRONG,
RESILIENT AND VIBRANT COMMUNITIES



MISSION

Maximizing the value and impact of community development, economic development and clean energy initiatives throughout New Hampshire.



VISION

We see a future New Hampshire whose communities are economically and socially resilient, reflect and respect their natural surroundings, and are places where people want to live, work and play.



VALUES

Integrity
Collaboration
Adaptability
Respect
Focus
Prosperity

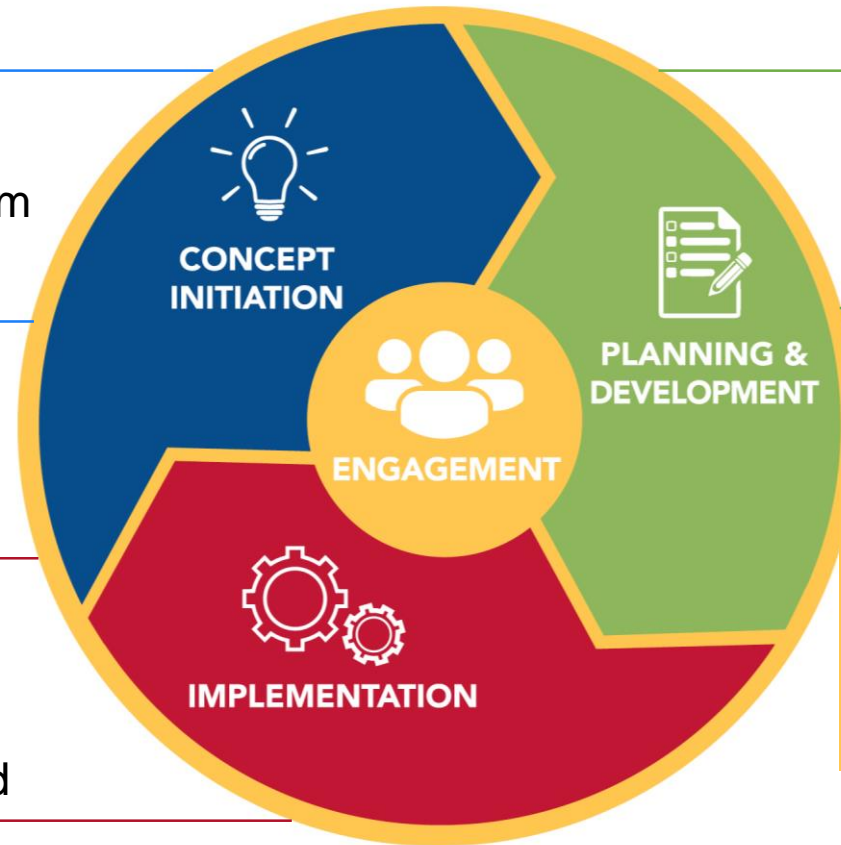
RESOURCES



CDFA's ECOSYSTEM

- Pre-Application Support
- Ideas 2 Innovation (i2i) Program
- L5 Capacity Building Program

- Community Dev. Block Grants
- Tax Credits
- Clean Energy Fund
- Community Development Fund



- CDBG Planning Grants
- Predevelopment Loan Program
- Energy Audit Program

ENGAGEMENT

- Network Building
- Asset Management
- Data & Outcome Analysis
- Ongoing Technical Assistance



CDFFA
COMMUNITY DEVELOPMENT FINANCE AUTHORITY

SFY 2019 IMPACTS

\$16 million infused into New Hampshire communities

80 projects supported **189** business donors engaged

Projects supported by CDFFA reported the following impacts:

- Assisted **198,390 people**
- Rehabbed, preserved or created **242 housing units**
- Created or retained **267 jobs**
- Supported **262 micro businesses**
- Developed or rehabbed **211,871 square feet**
- Estimated annual **energy savings of 626,508 kW hours**
- Saved an estimated **\$78,524** in annual energy costs



Tax Credit Program



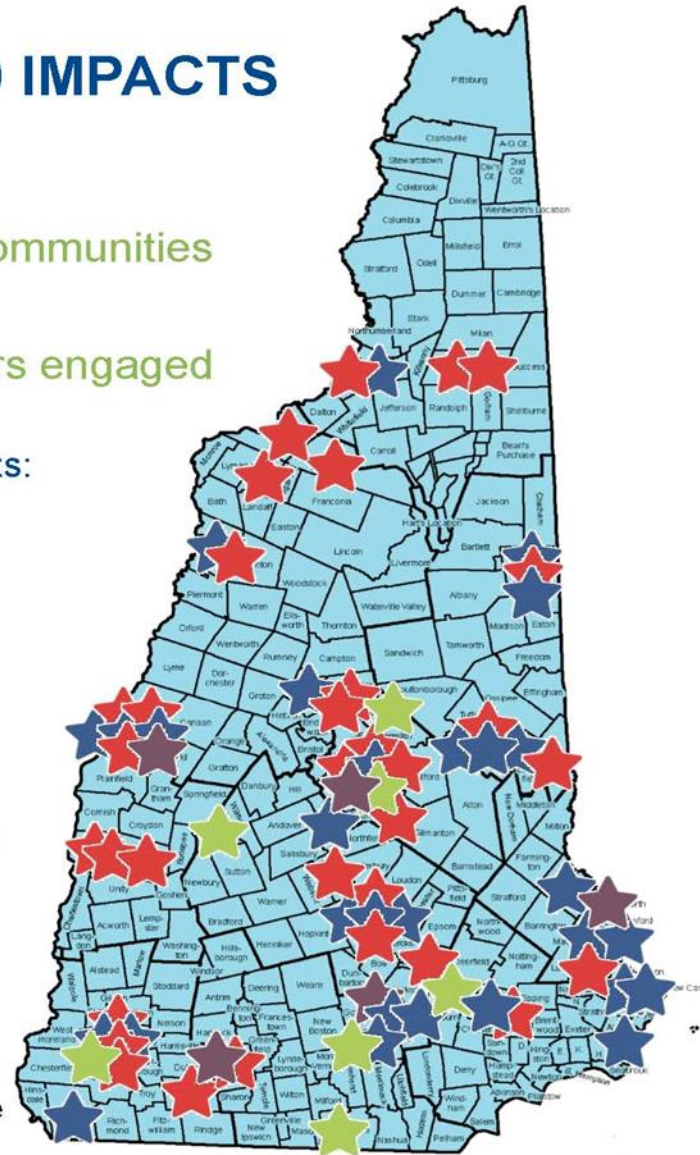
Clean Energy Fund



**Community Development
Block Grant**



Recovery Friendly Workplace



CAPITALIZE ON LOCAL OPPORTUNITIES



SHIFTING REGIONAL ECONOMIES



COMMUNITY INDICATORS

<i>Community Indicator</i>	<i>Geography</i>	<i>Topic</i>
<i>BASIC HUMAN NEEDS</i>		
Food Stamp Program (SNAP) enrollment	Municipality	Poverty
Free- and reduced-price school meal program enrollment	Municipality	Poverty
Percent of household median income needed for rent	County	Housing Affordability
Access to primary care physicians	County	Access to Health Care
Percent of population uninsured	County	Access to Health Care
Median age	Municipality	Population Composition
Percent of population over age 65	Municipality	Population Composition
<i>ACCESS to OPPORTUNITY</i>		
Taxable property value per capita	Municipality	Municipal Fiscal Capacity
Weekly wage of jobs	County	Local Economy
Change in annual average employment	County	Local Economy
Median household income above/at/below state median	Municipality	Income
Income tax returns with >\$100,000 in reported AGI	Municipality	Income
<i>COMMUNITY SUSTAINABILITY & VIBRANCY</i>		
Percent municipal population growth, 2010 to 2018	Municipality	Population Change

ENGAGEMENT

We support our community partners well beyond the deployment of resources. CDFA is dedicated to ensuring the long-term success of the organizations we provide ongoing technical assistance and assist with network building, asset management, compliance, as well as analyzing data and outcomes.

Technical Assistance

Across all our programs, we offer technical assistance, advice, application guidance, compliance support and connections to other funders. We work closely with our partners to find creative solutions and offer guidance on project development, strategy and planning, implementation and finance, among other topics critical to successful community economic development efforts.

Network Building

Successful community economic development efforts require a broad strategy to investments that revolve around the people living and working in our communities. Supporting these strategies requires comprehensive, community-based networks. CDFA is focused on helping partners make meaningful connections that build collaboration and capacity while maximizing impact and unlocking the potential within our communities.

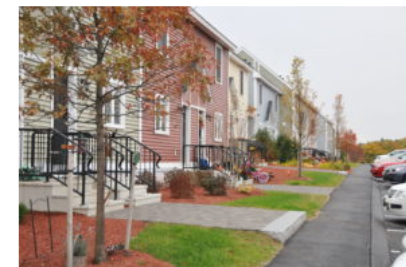
Data Analysis

CDFA assembles and uses relevant demographic, fiscal and other data, along with public input, to help guide planning and funding priorities, particularly for the federal Community Development Block Grant program.

In 2019, CDFA embarked on an initiative to update its data collection, analysis and visualization capacity. The initiative has the following components:

- Create a new "Core Data Index" to measure community need, using more up-to-date, relevant and varied data sources;
- Align data with CDFA strategic priorities, including Basic Human Needs, Access to Opportunity, and Community Sustainability and Vibrancy; and
- Create a data-visualization platform to display the Community Indicators within the 'Core Data Index,' as well as other data indicators, in a user-friendly and accessible way.

Learn more about the 13 data measures used in the Core Data Index (See **Table 1: CDFA Core Data Index – Community Indicators**) and explore New Hampshire municipal- and county-level data within the new CDFA Community Progress Indicators (Download **CDFA Community Progress Indicators**) to better understand the opportunities within your community. Additional data indicators and sources to help measure community need and inform strategic priorities can be found at <https://www.policymap.com/maps>.



Other Links

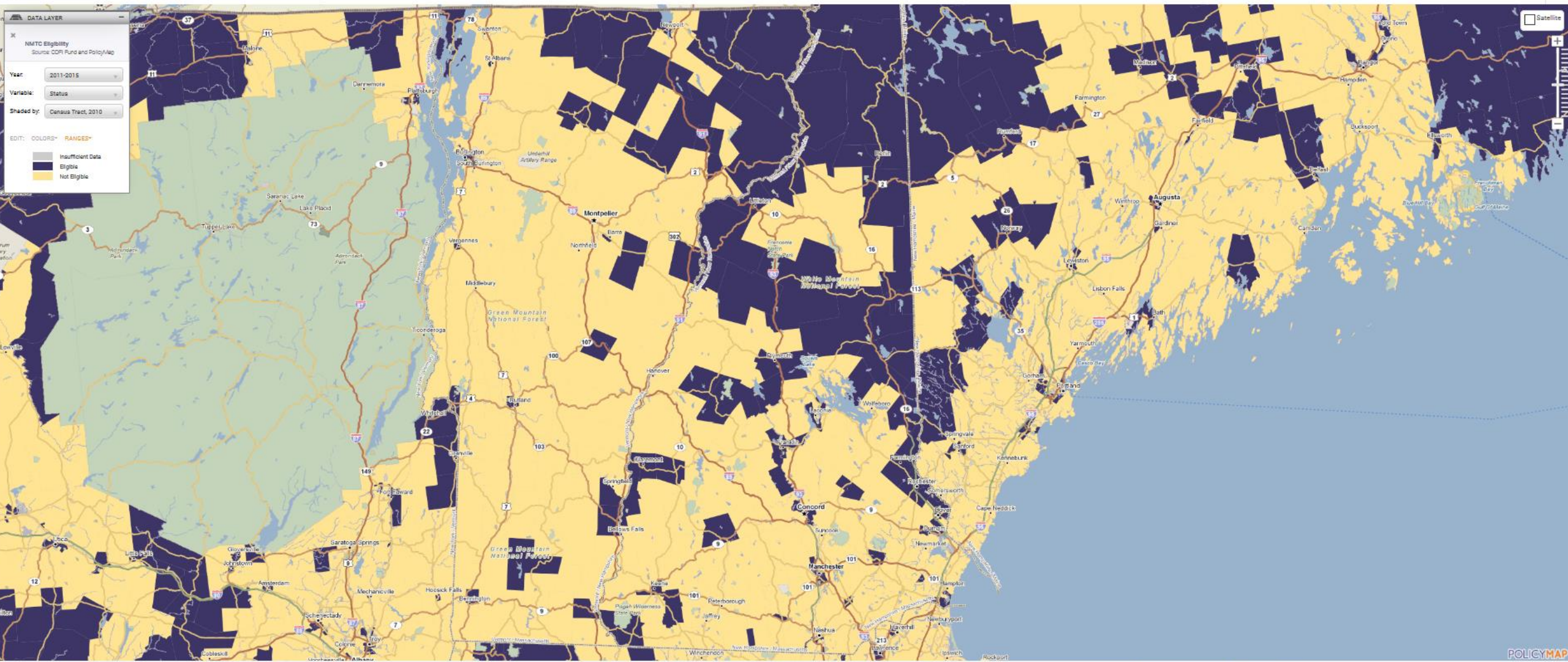
Events

Connect



Address

14 Dixon Ave, Suite 102



BUILDING CAPACITY



DRIVING ECONOMIC CHANGE





THANK YOU!

Community Development Finance Authority

www.nhcdfa.org

603-226-2170